

**WAIPU COVE RESERVE(S) BOARD**  
**Tuesday 7<sup>th</sup> March 2023, 7pm**  
Camp Waipu Cove all-weather room.  
**ALL WELCOME**

**OPENING KARAKIA**

**AGENDA (E & OE)**

**PRESENT.** R.Pullan, A.Trist, L.Trist, H.Kereopa, G.Mclean (Minutes), P.Baker, E.Cook, L.Shaft, G.Shanaghan, J.Melsop, L.Minhinnick(Zoom)

**APOLOGIES.** R.Stolwerk,

**MINUTES OF THE LAST MEETING: E.Cook, P.Baker All in favour**

**CONFLICT OF INTEREST:**

**CORRESPONDENCE:**

**Inwards:**

ASH 242- Reply to letter

Incident on Saturday 25<sup>th</sup> February

**Outwards:**

ASH 242 –Letter from Board

ASH 242- Reply to letter from Board

Maureen Bell – Letter from Board

**Motion to pass- P.Baker, H.Kereopa all in favour**

**REPORTS:**

- **Management report (attached below)**

It's been a month of weather. We experienced 5 days no power at the camp. One school camp cancelled due to Northland being in state of emergency, however, have now reinstated their booking. We have welcomed school camps from Northland and Auckland. General bookings day for Summer, 7<sup>th</sup> March, moved to online bookings which worked well.

- **Financial report**

- **WCSLSC Report (verbal)**

Kath and Rick are both away.

**Motion to approve R.King, E.Cook All in favour**

**GENERAL BUSINESS**

- **Dunes**

Welcomed Laura Shaft, Coast Care coordinator at Northland Regional Council, to talk about dunes and our dune journey. Giving us tools for the future and answering questions.

Discussing our back dune and the advantages of moving the fence back to support our Dune and weed control. Board intends to reinstate the fence at the bottom of the dunes as this was swept away in the cyclone. June/July we will look into involving community, local school groups and Patuharakeke with further dune planting if required.

- **Signage**

We have a meeting planned with Patuharakeke, to meet the managers and Rowan to discuss signage and local translation. We would like to include bilingual signage through the Camp and Reserve.

- **Front Entrance Update**

Geo tech has been in to test the ground. We are waiting on a reply from Steven.

**Board went into committee 8.16pm**

Exclusion of the public

*That the public be excluded from the following part of the proceedings of this meeting on the following grounds – Agenda items: Correspondence. The general subject matter of each matter to be considered while the public is excluded, the reason for passing this resolution in relation to each matter, and the specific grounds under section 48 (1) of the Local Government Information and Meetings Act 1987 for the passing of this resolution are as follows: General subject matter: ASH site. Reason for resolution: Protect individuals Ground(s) under s 48 (1) for passing resolution: 48 (1) (d) and 48 (2).*

*This resolution is made in reliance on section 48 (1) (a) of the LGOIMA 1987 and the particular interests protected by section 6 or would be prejudiced by the holding of the whole or the relevant part of the proceedings of the meeting in public are as follows; s.7.(2)(a) protect privacy of natural persons*

**Board came out of committee at 8.27pm.**

The Board reached resolution on this topic.

**CLOSING KARAKIA**

**Upcoming events on the reserve and local area**

- **Waipu Boutique Sunday Market** **HYPERLINK "<http://www.waipumarket.co.nz/>"&**  
**HYPERLINK "<http://www.waipumarket.co.nz/>"** **Café:** 2nd Sunday of the Month, Waipu  
Coronation Hall 9-1pm
- **Waipu Street Market** – Saturday or Sunday on Long weekends 9-1pm
- **Waipu Antiques and Collectables Fair** – Sunday of Long weekends 9-4pm

**Meeting ended: 8.27pm**

**Next meeting: Monday 3<sup>rd</sup> April 2023, 7pm**

## **Managers' Report for February 2023**

What a wet and wild month we've just had! Auckland Anniversary weekend was a total washout, and then came Cyclone Gabrielle and even more rain a week later. In and amongst this we've managed to have an OK Waitangi weekend (although a little quieter than previous years), as well as a couple of school camps with decent weather. It's been a busy month!

The multiple serious weather events have seen our occupancy levels down when compared YOY with average February occupancies. We have claimed on

our business interruption insurance for the loss of income during Cyclone Gabrielle - due to being closed for five days, with no power to the camp. We have also put in an insurance claim for damage around the camp, as we had several trees down and damage to overhead lights around the grounds. The clean-up involved getting in contractors to remove debris around the reserve and camp, plus cutting of trees that had fallen (one went down across the entrance to the camp).

The boat ramp and dunes were also badly damaged from the cyclone. We had repairs done on the boat ramp, which was lucky not to experience worse damage due to the incredible storm surge. Laura Shaft from NRC came to inspect the damage to the dunes (which will need refencing and replanting) and commented that they had held up quite well considering the force of the cyclone. We lost approximately 5m from the toe of our dunes.

We would like to thank the staff for all their hard work over this trying time, as we tried to keep operations running as best as we could. This involved staff coming to work to help clean up the camp and reserve, removing all the debris, even while some had no power at home themselves. Even getting here was difficult for some because of the state of the roads. Due to having no power we could not open the office and our phone lines were not operational. Some staff logged in from home to retrieve messages, contacting our upcoming guests to advise of the closure of the camp. Everyone pitched in to help, which made the difficult situation so much easier.

This month we have had two new staff start. Sophia Baker on reception and Unita McCarthy as a cleaner. Sophia replaces Emily Stolwerk who has left to start her degree at Canterbury University. Unita has worked for us previously and will fill the gaps left by some of our summer student cleaners who have gone back to school.

Our general bookings open soon on the 7th of March, so we have been busy over the last few weeks making preferential rebookings for those guests who stayed with us over the summer. We have over 500 campers rebooked for next summer already. The last week has seen reception juggling requests for date and site/cabin changes. We have only a small handful of sites available to be booked for over the new year's period, and no cabins available at all.

On the school camp front, we have so far had two school camps take place. The first was Springbank school (from Kerikeri) in early February, which was

the first time they had stayed with us. We've also had one Belmont school camp through, with another Belmont group next week. Later next month we will welcome several Waipu Primary school camps, and Ormiston Junior College. Unfortunately, Kristen school postponed their camp as it was supposed to take place just after the cyclone occurred. However, they have rebooked the camp for the 13<sup>th</sup> of March. Fingers crossed for better weather!

Our new donation feature has gone live on our website, enabling guests to donate \$2 toward "dune restoration projects". This initiative will help support dune restoration and repairs and should help us meet the criteria for a Qualmark Environmental GOLD award when we are next assessed.

**Northblock Refurbishment Update:**

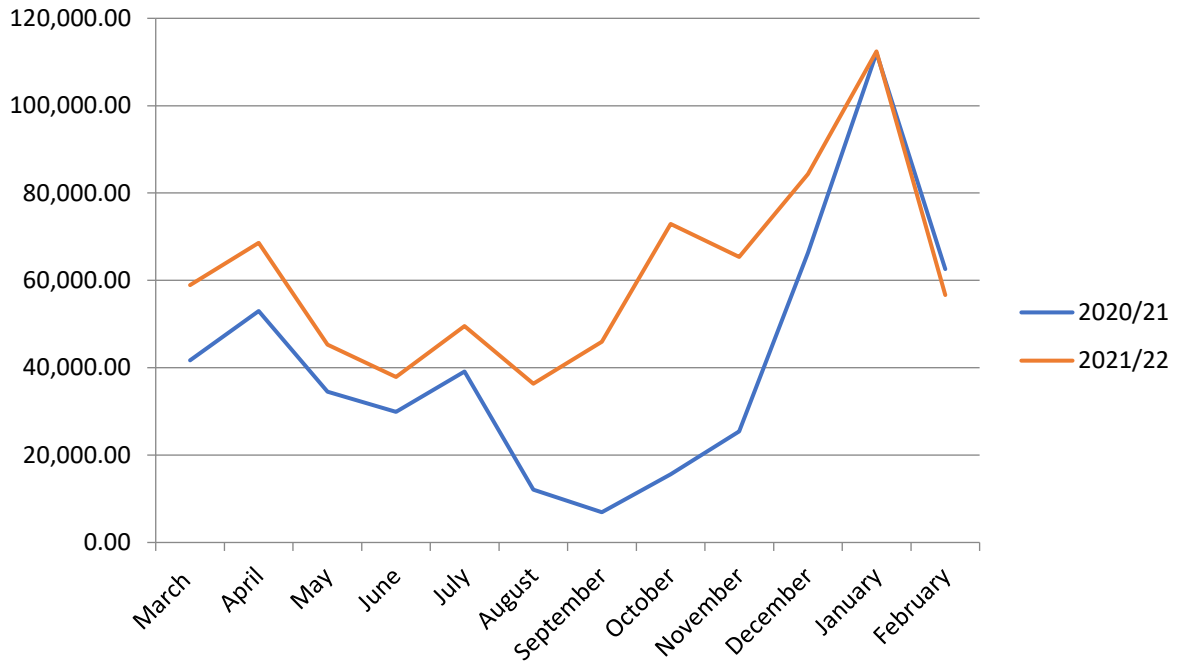
Duraplan have been to site to measure up so they can provide a quote on toilet and shower partitioning.

**Front Entranceway Development Update:**

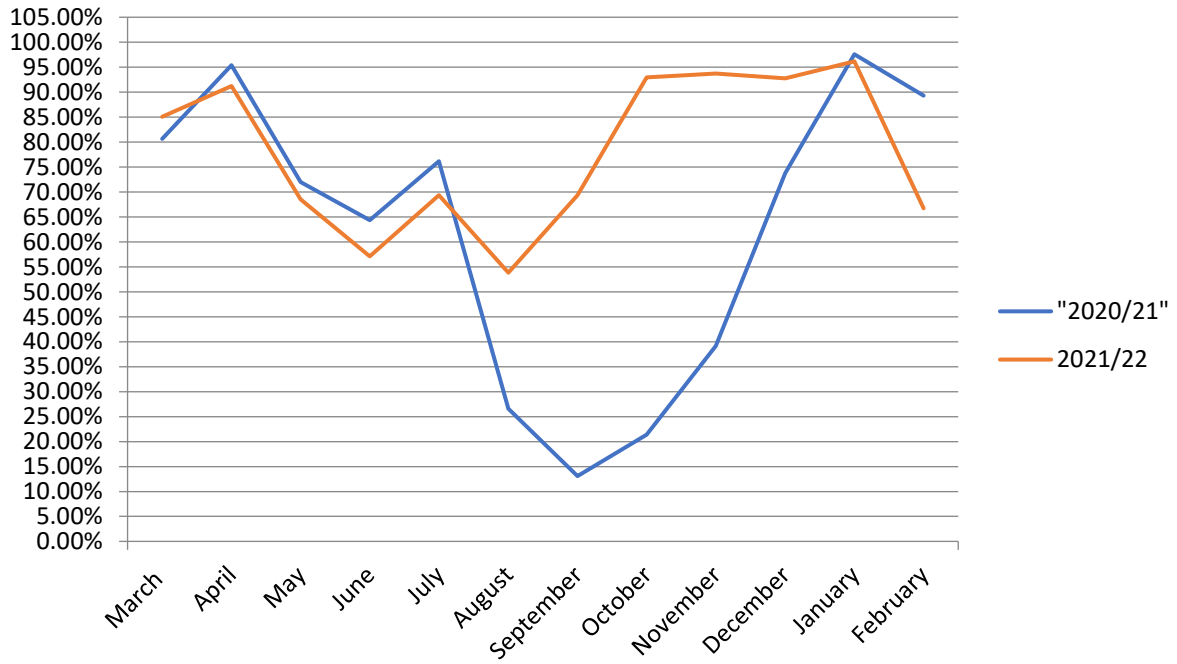
Fire Collective have completed a fire safety report for the project.

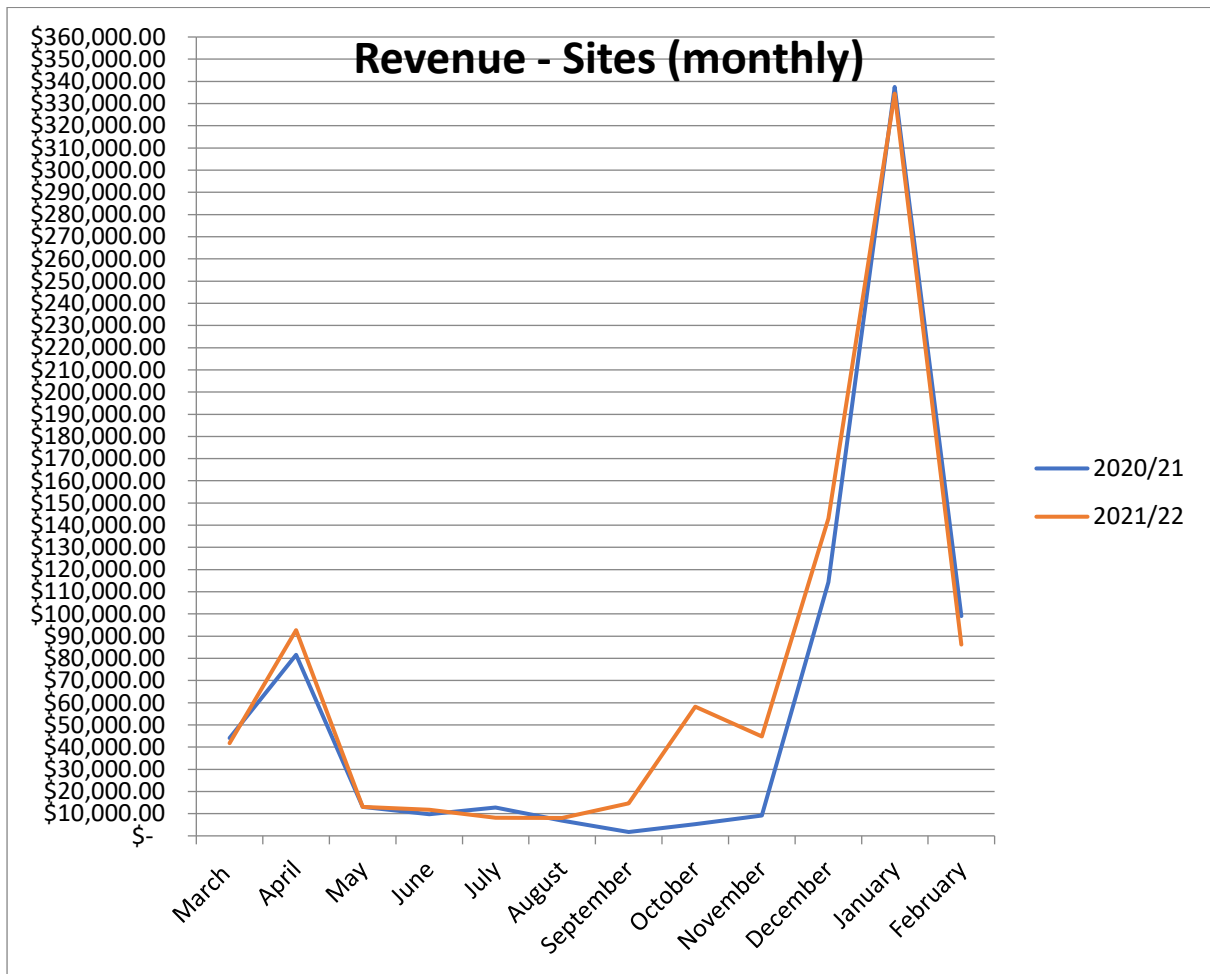
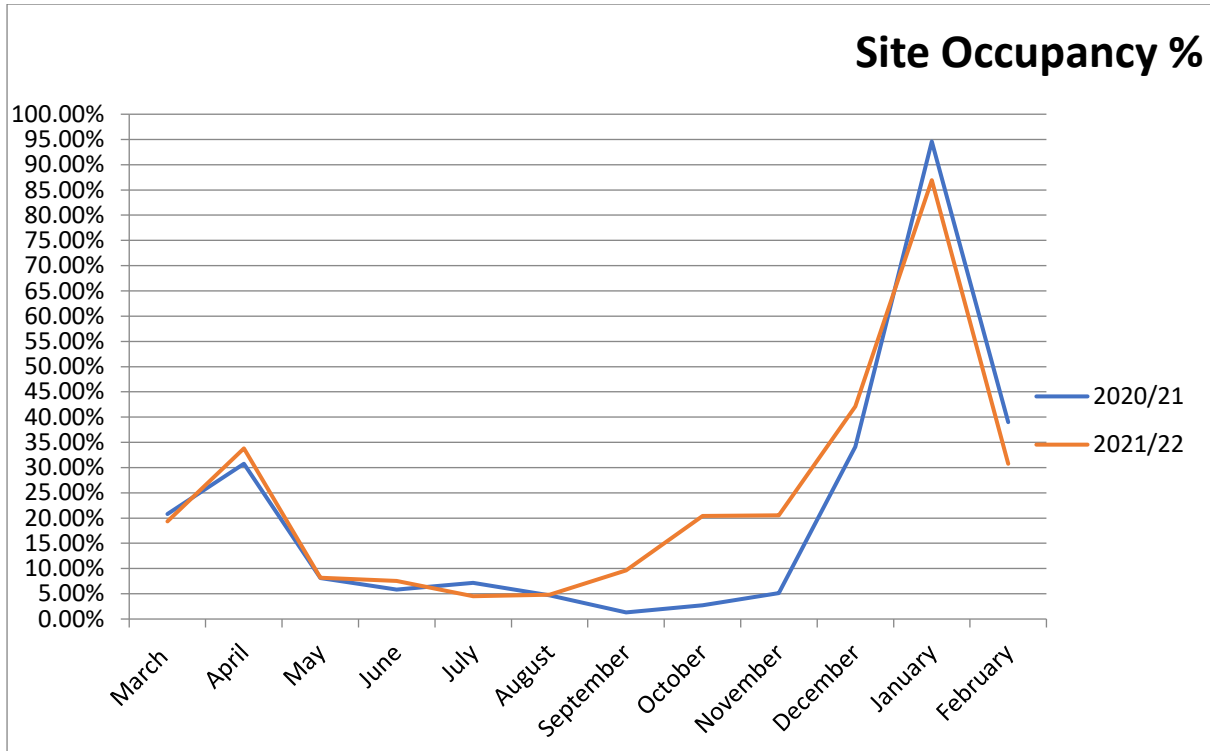
Geotech have conducted soil testing at site and investigation into updating of sewage, drainage and electrical services.

### Revenue - Cabins (monthly)



### Cabin Occupancy %





Ngā mihi nui,  
Anton and Lucy