

WAIPU COVE RESERVE(S) BOARD

Tuesday 9th August, 7pm

Camp Waipu Cove all-weather room.

ALL WELCOME

OPENING KARAKIA

AGENDA (E & OE)

PRESENT: R.Pullan, L.Trist, A.Trist, G.Mclean, R.King, P.Baker, L.Minhinnick, H.Kereopa

APOLOGIES: R.Stolwerk, E.Cook

MINUTES OF THE LAST MEETING: -R.King, Second H.Kereopa

CONFLICT OF INTEREST:

CORRESPONDENCE:

Inwards:

Outwards:

Motion to approve inwards/outwards correspondence – n/a

REPORTS:

- **Management report (attached below)**

Experienced a wet month, quieter on campers but hoping to pick up in the next couple of months. The North gate has been installed and lock is installed, just awaiting signage. For security reasons the gate will be locked at 10pm. Fencing alongside the wheelchair access to the beach has been finished. Managers took part in the Holiday Park conference in Christchurch and Victoria and Jemma completed a Newbook training.

- **Financial report**
- **WCSLSC Report (verbal) -N/A**
P.Baker, Second R.King

GENERAL BUSINESS

- **Cycle Rack**

Supports and compliments the Waipu Cycle Way project. Investigating a cycle rack that is in view of café to work in with bike users. Bikes are becoming more popular.

- **Community engagement for Algae survey**

Looking to advertise resident contributions to the algae survey in our regular Bream Bay News ad. This survey has been instigated to monitor and find patterns to the Algae. Hollie interested in results and data, Rowan to investigate update from Cawthron Institute.

- **Patuharakeke consultation - Dog sign**

Lisa has attended Putuharakeke hui, wanting to use bilingual signage on the sign and also add in Patuharakeke logo. Hollie to liaise with Lisa and kaumatua for the bilingual language.

- **Patuharakeke tamariki - Eke Ngaru Surf**

There's a lot of interest with Whanau from Patuharakeke using Waipu Cove for water sports. Looking at a base for Māori tamariki to use for kai & gathering. Suggested Surf club at present or future use of the shared large group covered space in the future developments

- **Entranceway cultural alignment**

Welcoming is an important process, Patuharakeke currently working on ways to document and tell their history and stories of significant sites in our local area, they would like to be involved in cultural mahi toi of the front entrance. This aligns well as we too would like to share cultural story through our entrance so we see a positive alignment of this. Lisa to liaise with managers and Steven Chambers.

- **Set AGM date**

Sunday September 18th, 11am AGM, shared kai then to follow with September board meeting.

CLOSING KARAKIA

Upcoming events on the reserve and local area

- **Waipu Boutique Sunday Market** [HYPERLINK "http://www.waipumarket.co.nz/"](http://www.waipumarket.co.nz/) & [HYPERLINK "http://www.waipumarket.co.nz/"](http://www.waipumarket.co.nz/) Café: 2nd Sunday of the Month, Waipu Coronation Hall 9-1pm
- **Waipu Street Market** – Saturday or Sunday on Long weekends 9-1pm
- **Waipu Antiques and Collectables Fair** – Sunday of Long weekends 9-4pm

Meeting ended: 8.30pm

Next meeting: Sunday September 18th AGM, followed by shared kai with Board Meeting.

AGM- Herald an Breambay News AD to be done. Herald to be done a month beforehand.

Mid Winter Dinner- 13th Sept Tuesday

Managers' Report for July 2022

July has been another wet month, and the camp is noticeably quieter than it was this time last year. We are putting this down to both the weather and the fact that a lot of people are keen to get overseas to somewhere hot in the winter, now that they can again. Our school holidays were certainly a bit quieter than normal.

It's likely that sickness due to COVID, as well as tougher economic times for many, is playing a part in our slightly lower occupancy levels too. We have had a lot of last-minute cancellations due to COVID, as the second wave has ripped through the Auckland area in the last month or so.

We've had more staff off with COVID, as was expected. The flu has also been an issue for us, although quite a few staff have taken up the offer of a free flu shot this year offered by the camp.

Although it has been fairly quiet, we have been keeping ourselves busy with our maintenance and off-season jobs. The North end gate is nearly complete, and the green waste area down this end has been totally cleared. All cabins have just had their carpets, curtains and sofas professionally steam cleaned.

All departing ASH are now off site, and these sites have all now been regrassed. The process took longer than normal due to weather disruptions – it has been an extremely wet month (again).

Anton and Lucy have just returned from attending the annual Holiday Parks Association (HAPNZ) conference, which was held in Christchurch. It is sounding like we can expect international visitors to start returning in good numbers before the end of the year, when more airlines return to flying into New Zealand. Additional routes are opening up, especially from the US – where there is strong interest in visiting New Zealand. In fact, Australia and the US look to be our biggest markets in the next 12 months, with China (who are usually our largest market) off the table for now.

While in Christchurch we also attended a Newbook training session, along with Victoria (our Reception manager) and Jemma (our fulltime receptionist) Newbook is our PMS system and is getting more sophisticated every year. We learnt about some of the new enhancements they have been working on and came away with fresh ideas to improve our processes and the service we offer our guests.

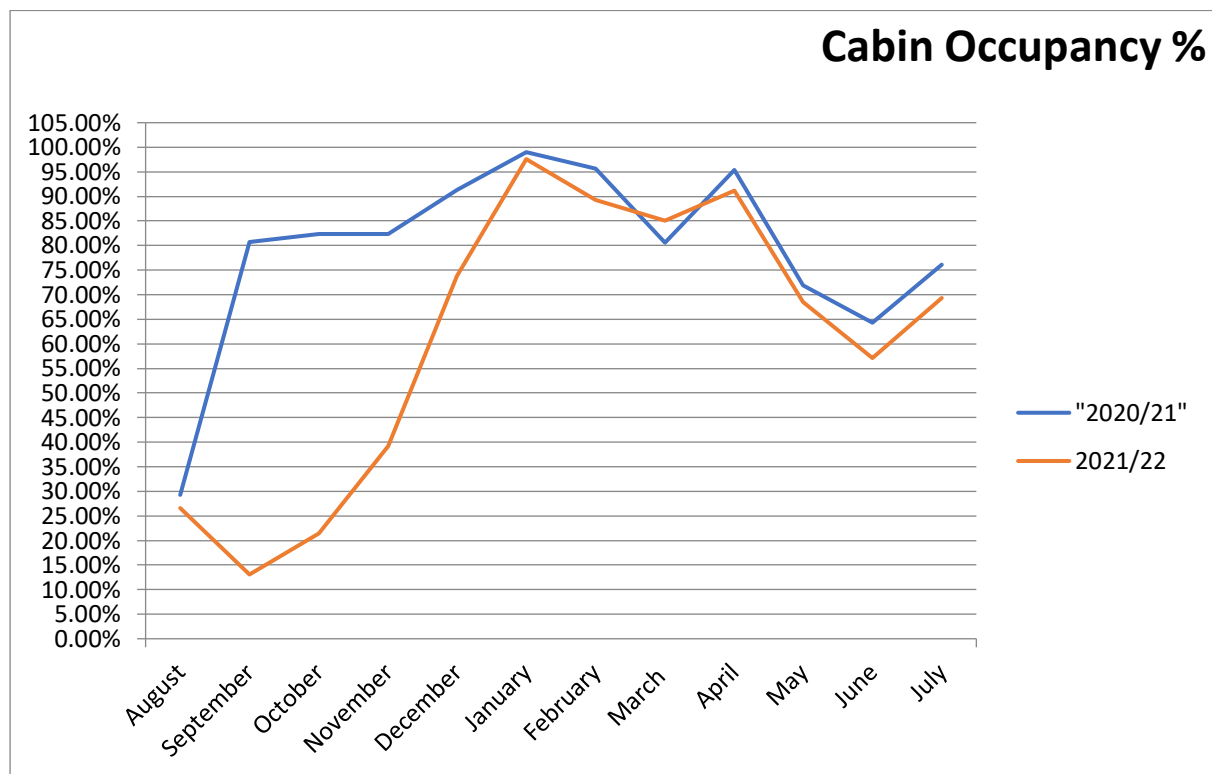
Finally, Anton has emailed the board with update from Steven Chambers regarding the Entranceway Development so we can get on with deciding the next steps in this project.

Regards

Anton and Lucy

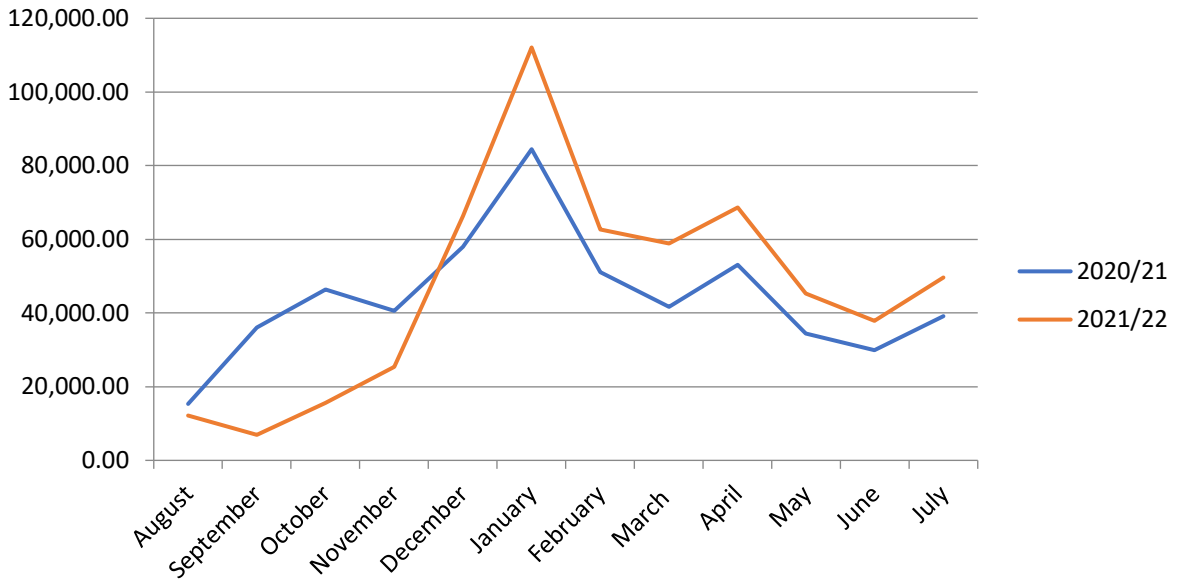
Occupancy and Revenue for July 2022

Cabin Occupancy

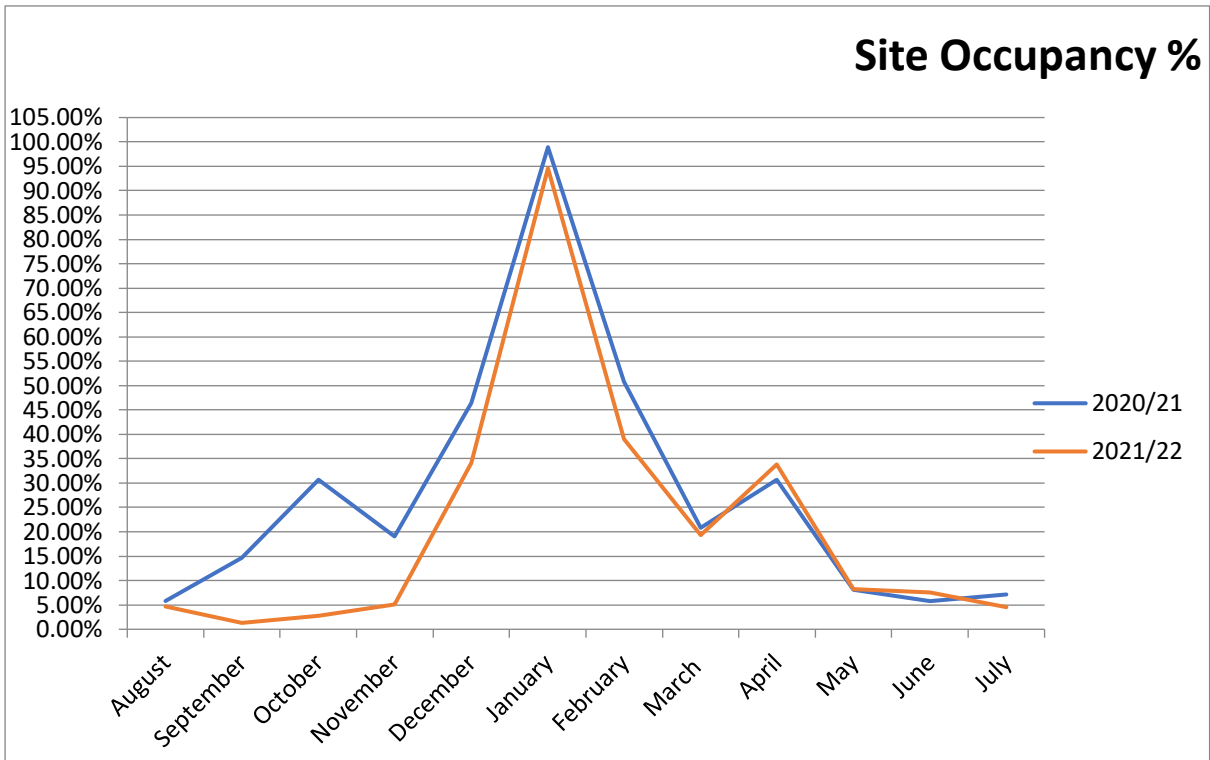


Cabin Revenue

Revenue - Cabins (monthly)



Site Occupancy



Site Revenue

