

WAIPU COVE RESERVE(S) BOARD

Monday 2nd May 2022, 7pm
Camp Waipu Cove all-weather room.
ALL WELCOME

OPENING KARAKIA

AGENDA (E & OE)

PRESENT: P. Baker, A. Trist, L. Trist, K. Kereopa, E. Cook, R. King, M. Bell, R. Stolwerk

APOLOGIES: R. Pullan, L. Minhinnick, K. Manning

MINUTES OF THE LAST MEETING: Approved as true and correct

CONFLICT OF INTEREST: None

CORRESPONDENCE:

Inwards:

6/4/22 – R & P Murray – ASH fees vs. Casual rates

8/4/22 – WCSLSC – Invite to Easter dinner

Outwards:

11/4/22 – R & P Murray – ASH fees vs. Casual rates

Motion to approve inwards/outwards correspondence - R. Stolwerk/R. King/All in favour

REPORTS:

- **Management report**
- **Financial report**
- **WCSLSC Report (verbal)**

Thank you to Lucy for attending presentation. Easter dinner was great success. Kitchen renovations have started and are being paid for by central government funding. Easter was the end of the patrolling season. A few camps are booked in for the coming months.

Motion to approve reports - R. Stolwerk/E. Cook/All in favour

GENERAL BUSINESS

- **Patuharakeke input for our response to the stream (preparation for algae) – (postponed - Hollie will speak at next meeting)**
- **Steven Chambers – Development update (7.15pm)**

Discussion regarding progress with the camp entrance development. Anton will send Steven recommendations of consultants (Geotech, civil engineers etc) used previously and Steven will liase with them and suggest any others that may be needed before approaching council. Thank you to Steven for attending. Anton will have update for Board prior to next meeting.

- **Clearing out scrub area behind tennis court**

Discussion regarding removing trees and clearing the space as it currently cannot be used for anything. There will still be space for green waste that will be screened off. Managers will provide cost estimate for Board.

- **Board Succession (postponed until next meeting)**

CLOSING KARAKIA

Upcoming events on the reserve and local area

- **Waipu Boutique Sunday Market & Café:** 2nd Sunday of the Month, Waipu Coronation Hall 9-1pm
- **Waipu Street Market** – Saturday or Sunday on Long weekends 9-1pm
- **Waipu Antiques and Collectables Fair** – Sunday of Long weekends 9-4pm

Meeting ended:
Next meeting: 8:20pm

Managers' Report for April 2022

April is coming to a close and it's been a mixed bag weather-wise. We've had lots of windy, rainy weather interspersed with some warm, dry days. Some of the bad weather hit us towards the end of Easter and continued into the first week of the school holidays. The days are certainly getting colder and shorter quickly, as we head towards late autumn.

Despite the less-than-ideal weather we have had good occupancy over the school holidays, with Easter being at full capacity. ANZAC weekend was also busy. It's been nice to have lots of families in the camp enjoying themselves. Unfortunately, the annual women's fishing competition did not go ahead this year and nor did the Waipu Easter Carnival, both due to COVID complications. Hopefully more events will return next Easter

The vaccine pass requirement (for entry to the camp) for both guests and staff was dropped from the 4th of April, in line with the government's official announcement. This meant that we no longer had to scan passes for all the Easter arrivals – which did make the check in process a lot quicker. Wristbands were still issued as we have decided we will be keeping these over peak periods. We've also reemployed one former member of staff now that the vaccination requirement has been dropped.

We've been quite stretched staffing-wise this month as we've had five staff away testing positive for COVID. The remaining staff have taken on extra shifts to cover and been very flexible about it - which we are very grateful for. Everyone has pulled together, and it hasn't affected the day-to-day operations too much.

Leading up to the Easter period, it has been quite busy - with site repairs happening and other bits and pieces of maintenance occurring. We have two more ASH departing this month (sites 62 and 117) with there likely to be more departing before the end of the ASH contract year.

All ASH electricity accounts have been read and invoiced out, ASH contracts will be issued in the coming week for the 2022 / 2023 contract year.

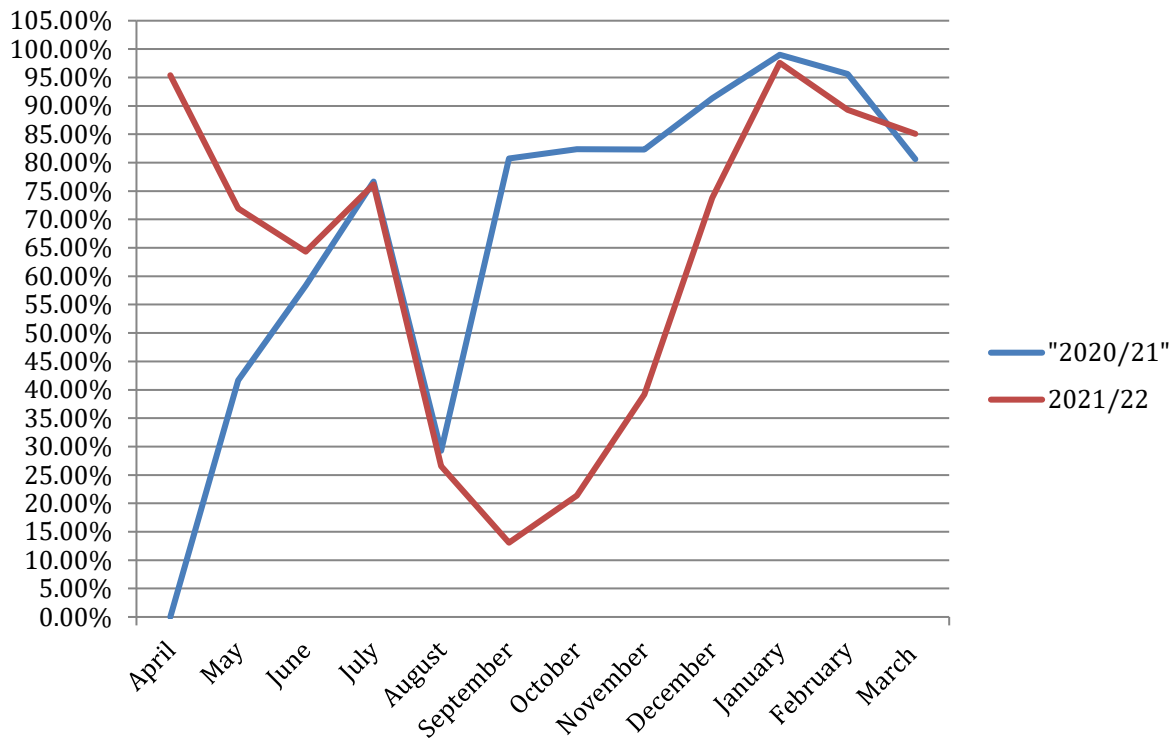
There will be further site repairs as more ASH depart, which we will be getting on to over the winter months. We will also be making a start on the remaining cabin carparks once the school holidays are over.

Regards

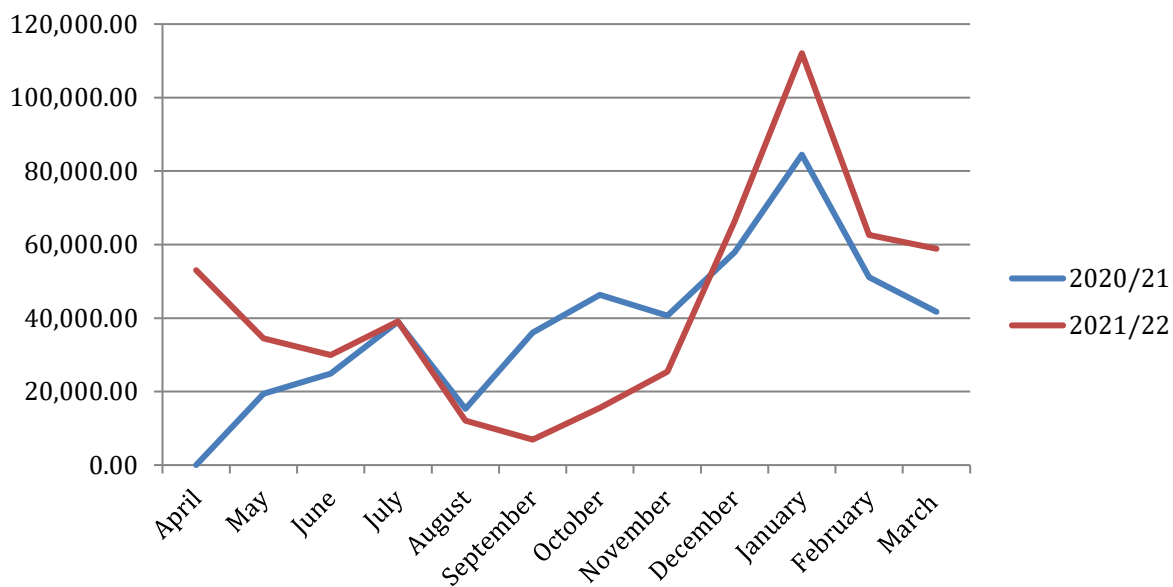
Anton and Lucy

Occupancy and Revenue for March 2022.

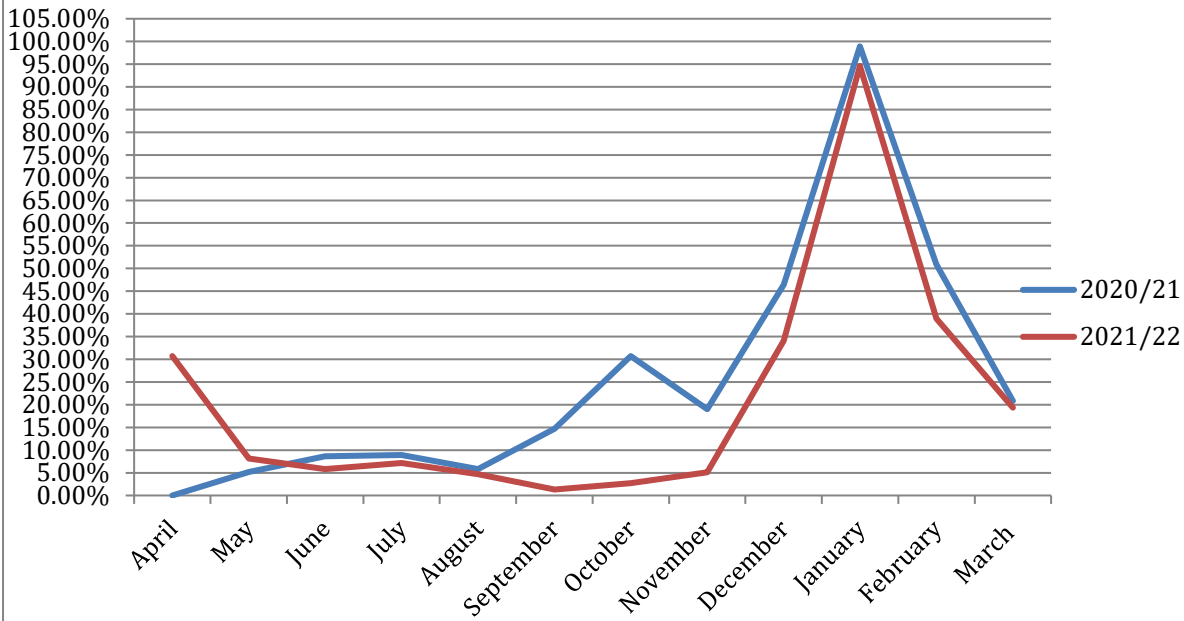
Cabin Occupancy %



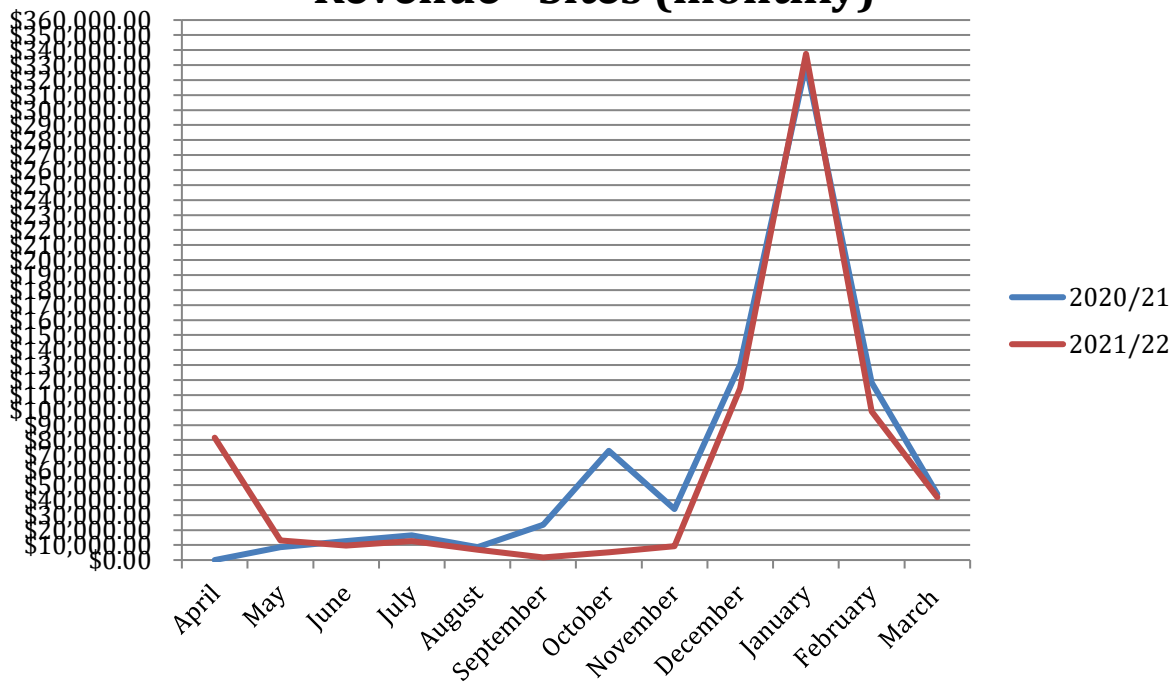
Revenue - Cabins (monthly)



Site Occupancy %



Revenue - Sites (monthly)



March 2022 Financials

	March 2022	March 2021	Comments
Revenue	\$ 90,895	\$ 76,838	Up \$14,037
Payroll	\$ 52,064	\$ 46,495	Up \$5,570
Expenses	\$ 88,339	\$ 83,905	Up \$4,434
Surplus/deficit	\$ 2,574	\$ 5,605	Down \$3,031
Wage Subsidy	\$ 0.00	\$ 12,644	

Financial report March 2022

Revenue per ASH (60): \$0

Revenue per camp site (166): \$226

Revenue per cabin (16): \$3,209

Actual funds available in all bank accounts 22/04/22 = \$1,011,957 which includes \$641,105 on term deposit @ varying interest rates and terms.

Revenue:

Revenue up for the month by \$14,037 mainly due to our self-contained cabin revenue and kitchen cabins, causal site fee's down \$1,422 on LY. We are still feeling the effects of COVID as the camp is still not back to it's usual levels compared to 2019 before the pandemic. YTD our revenue is down \$164,918 compared to LY, our net surplus is still pretty healthy YTD at \$544,630 down \$62,297 on LY. Our occupancies were strong in our cabins with self contained cabins at 94.46% @ ARR per night \$155.92

Expenses

Up \$4,434 on LY and YTD expenses are down \$33,303 which is pleasing. Linen rental is up for the month which is mainly due to our 3 new cabins with extra linen being ordered for these. LPG up \$2,022 which is due to timing of invoices.