

WAIPU COVE RESERVE(S) BOARD

Monday 28th March 2022, 7pm
Camp Waipu Cove all-weather room.
ALL WELCOME

OPENING KARAKIA

AGENDA (E & OE)

PRESENT: R. Pullan, P. Baker, R. King (zoom), B. Hopkins (zoom), E. Cook (zoom), R. Stolwerk, A. Trist (zoom), L. Trist (zoom), L. Williams (7.15pm).

APOLOGIES: H. Kereopa, L. Minhinnick

MINUTES OF THE LAST MEETING:

MOTION to approve the minutes of previous meeting - R. Stolwerk/P. Baker/All in favour

CONFLICT OF INTEREST: None

CORRESPONDENCE:

Inwards:

07/03/2022 – R & P Murray – Request for minutes

Outwards:

08/03/2022 – R & P Murray – Copy of minutes

MOTION to approve correspondence - E. Cook/R. King/All in favour

REPORTS:

- **Management report**

Attached below

- **Financial report**
- **WCSLSC Report (verbal)**

The surf club is welcoming Lauren Williams as their new administrator. She will be starting in October and will be a very welcome addition – she brings with her a wealth of skills and experience from SLSNZ. Surf Life Saving NZ is keeping vaccine mandates in place until the end of the season.

MOTION to approve reports - R. Stolwerk/P. Baker/All in favour

GENERAL BUSINESS

- **Patuharakeke input for our response to the stream (preparation for algae) – Lisa (postponed from last meeting)**

Discussion postponed.

- **Steven Chambers drawings for approval/Update on entrance development**

Steven will be invited to the May Board meeting to outline the next steps. He will not be able to project manage himself as he is based in Tauranga. The project is likely to be completed over two seasons. Possibility of purchasing existing buildings will be discussed with Steven.

- **Casual site rates**

Discussion regarding casual camping nightly site fees.

MOTION to increase casual site rates by \$2 per night for the peak and shoulder seasons commencing 20th December 2023, no change to winter or child rates - R. Stolwerk/R. King/All in favour

- **Vaccination Policy**

Discussion regarding continuation of vaccination policy and wrist band policy.

MOTION to remove vaccination policy in line with government advice from 4th April. Wrist bands will continue to be used over the peak periods - E. Cook/P. Baker/All in favour

CLOSING KARAKIA

Upcoming events on the reserve and local area

- **Waipu Boutique Sunday Market & Café:** 2nd Sunday of the Month, Waipu Coronation Hall 9-1pm
- **Waipu Street Market** – Saturday or Sunday on Long weekends 9-1pm
- **Waipu Antiques and Collectables Fair** – Sunday of Long weekends 9-4pm

Meeting ended: 7.45pm

Next meeting: Monday 2nd May, 7pm

Managers' Report for March 2022

March has been another up and down month weather-wise. Plenty of wet, stormy weather in amongst some hot more settled days. The weekends have remained busy although we have been quieter during the week than we'd usually be for this time of year. We would normally have school camps staying most of March, but this has not been the case this year. The absence of school camps has had a definite effect on our revenue this month.

We've had some struggles this month with staff away with COVID or in isolation. We have since applied for (and been granted) an Essential Service Exemption meaning staff may still attend work if someone in their household has COVID, providing they have no symptoms, test negative before work each shift and strict precautions are taken limiting contact with others. In addition to covid related staff absence, we have also had a few staff off with other illnesses, so we have been quite stretched some weeks. We are lucky to have a great team that have put up their hands to take on extra shifts and fill in the gaps where needed. Without staff like this it would be very difficult to keep things running as well as they have.

Just today the government has announced that vaccine pass requirements for entry to venues and businesses will be dropped from the 5th of April 2022, as will vaccine mandates for most sectors. From Friday the 25th of March 2022 there will be no requirement to scan QR codes for entry either. We will be discussing these developments further with the Waipu Cove Reserve Board as we will need to review our current policy regarding this. It was to be reviewed at the end of April but will be brought forward and a decision made very soon.

Our general bookings opened on the 7th of March, with around five groups of people queued at the door when the office opened that morning, all keen to snap up what was left. Whatever sites we had left for the Boxing day – early January period (our busiest time) were booked out within minutes of opening. A large number of bookings were taken for summer 2022/23 and all went smoothly.

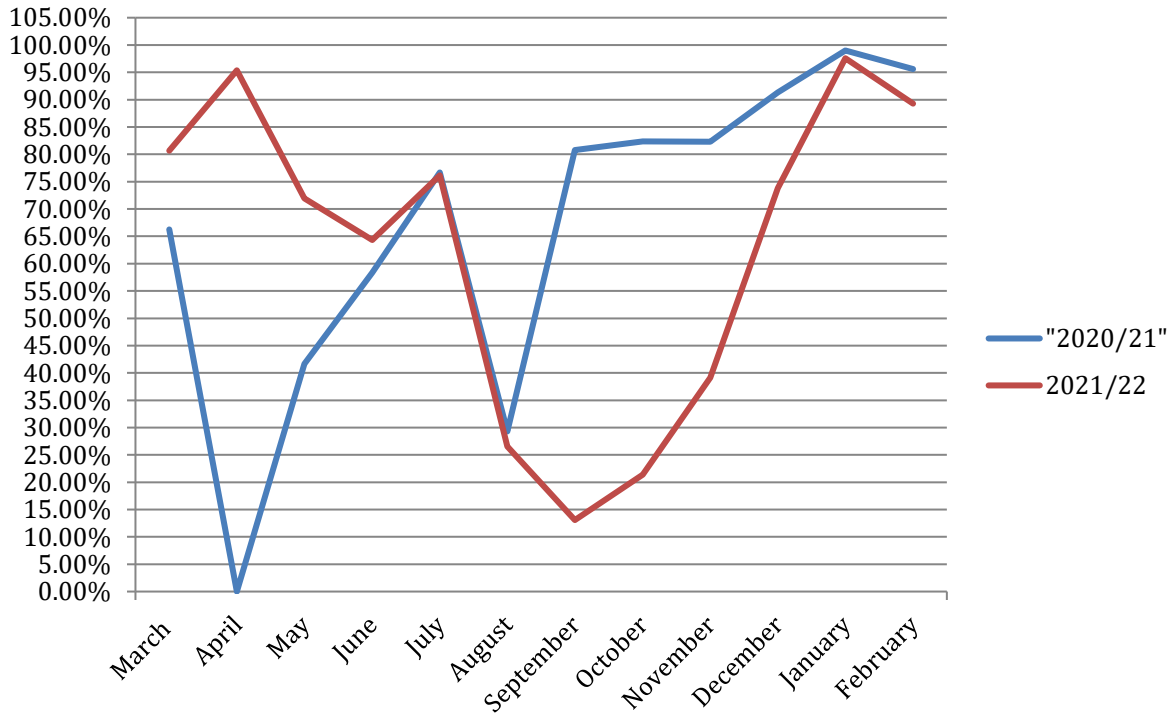
Now we are busy getting prepared for Easter and the upcoming school holidays, with bookings looking very healthy. When the school holidays have finished, we are encouraging all staff (who haven't already had a break) to plan some time off before we get busy again late September/early October. Everyone will be needing some time to recharge after a busy summer and shoulder season, and the added stress of trying to work around covid-related issues.

With the camps bank balance looking healthy once again, \$500k has been put on term deposit for for 160 days and interest rate of 1.20%

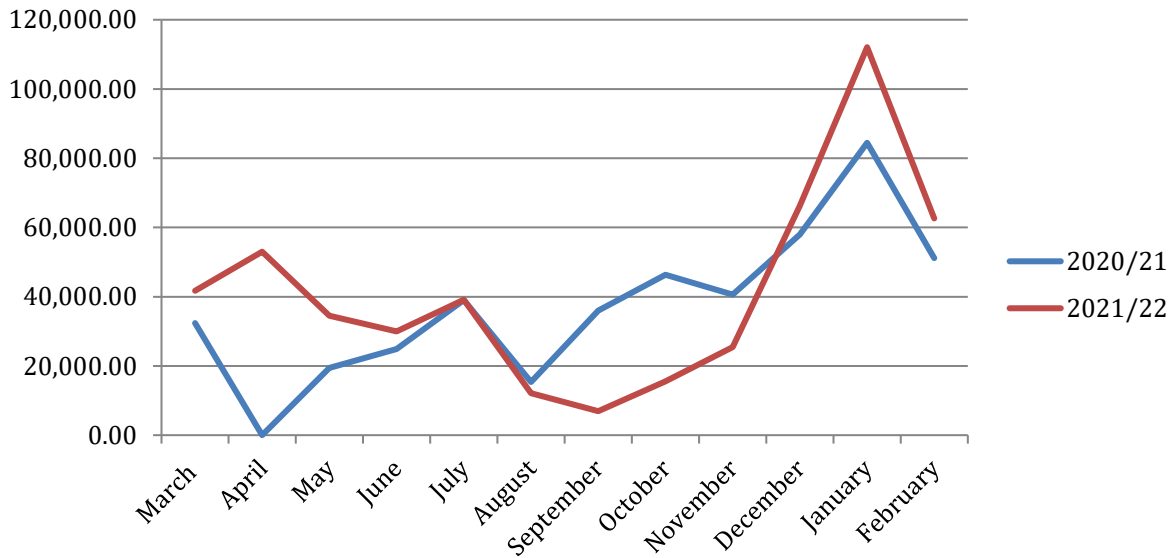
Regards
Anton and Lucy

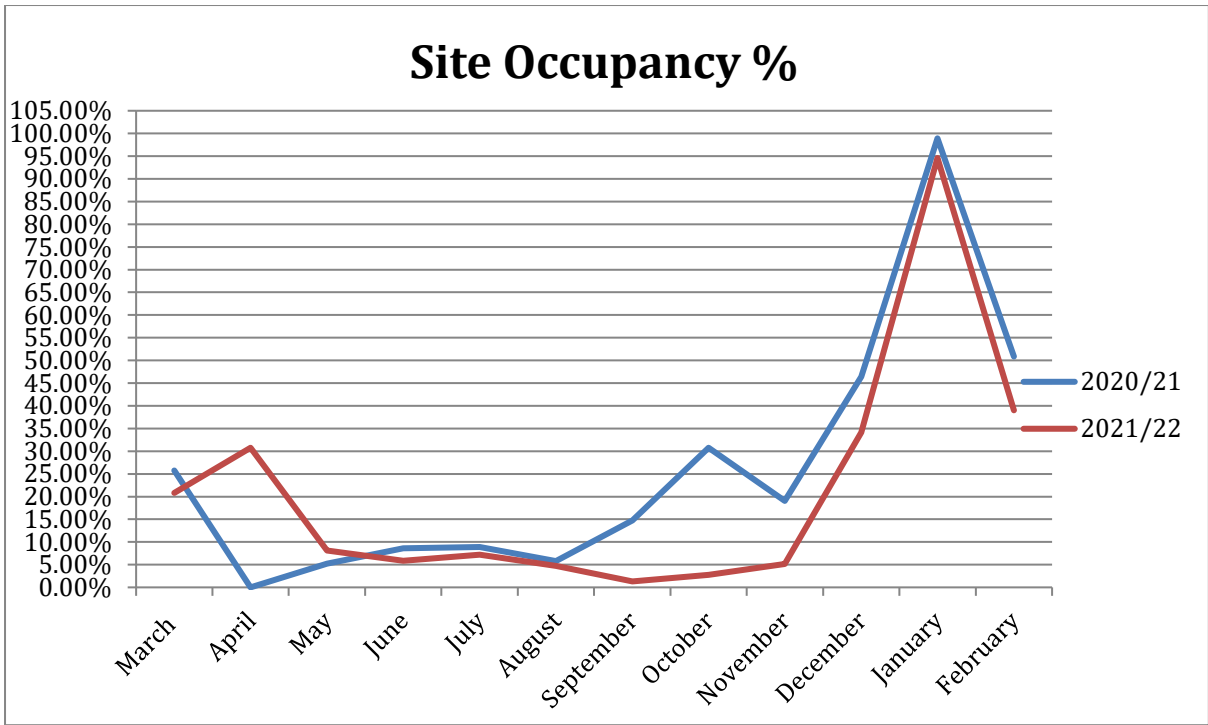
Occupancy and Revenue for February 2022.

Cabin Occupancy %

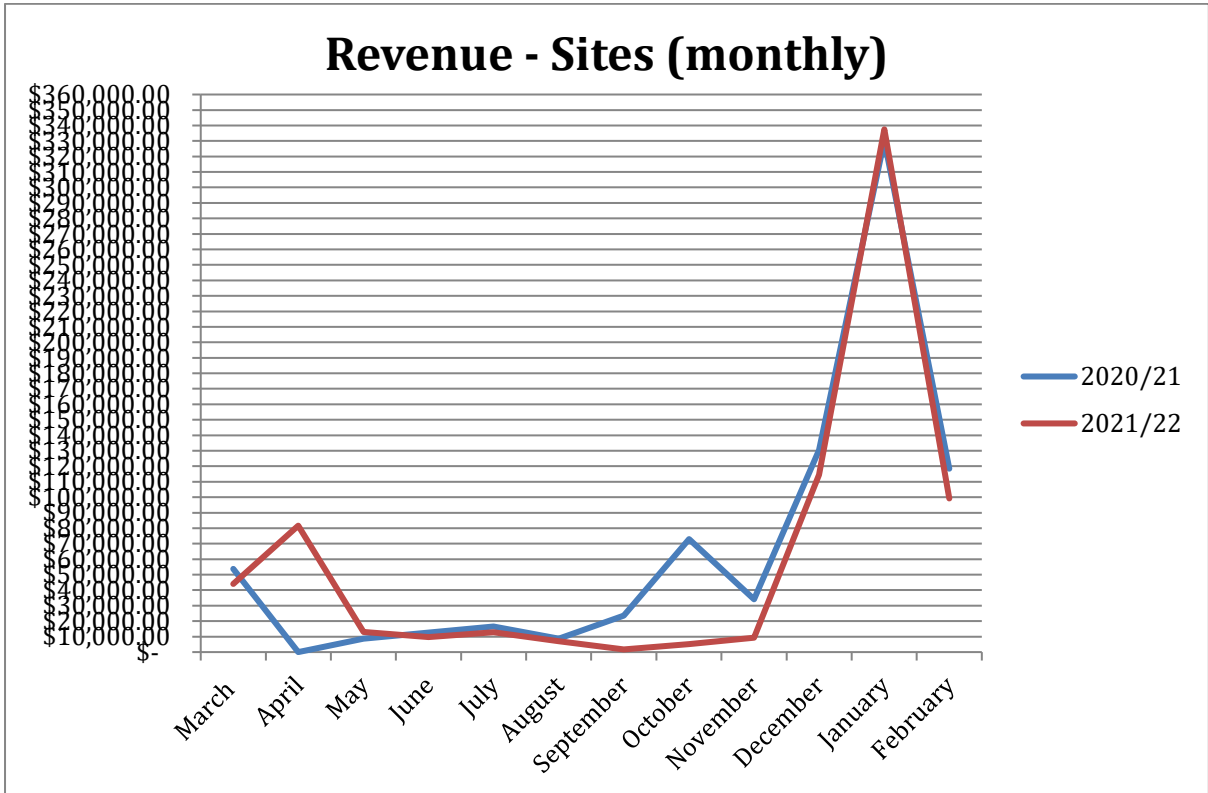


Revenue - Cabins (monthly)





Site Revenue



Financial Summary:

February Financials

	February 2022	February 2021	Comments
Revenue	\$ 148,054	\$ 153,901	Down \$5,848
Payroll	\$ 46,362	\$ 42,100	Up \$4,261
Expenses	\$ 106,517	\$ 106,563	In – line

Surplus/deficit	\$ 42,307	\$ 47,913	Down \$5,606
Wage Subsidy	\$ 0.00	\$ 0.00	

Financial report February 2022

Revenue per ASH (60): \$0

Revenue per camp site (166): \$548

Revenue per cabin (16): \$3,367

Actual funds available in all bank accounts 25/03/22 = \$1,045,723 which includes \$640,893 on term deposit @ varying interest rates and terms.

Revenue:

All in all a pretty good month considering the effects of COVID and also the loss of all our school camps this year. Revenue down \$5,848 which is largely due to casual site fee's which were down \$13,634. Self contained cabins up \$13,290 which is a result of our 3 new cabins which were built last year. YTD our revenue is down \$178,955 with all major revenue streams down except for self contained cabins, YTD our surplus before depreciation is \$542,046 which is only down \$42,266 on last year.

Expenses

Expenses were well controlled and are in-line with 2021, we are seeing a lot of suppliers lifting their pricing due to inflationary pressures. Good savings in electricity of \$2,442 and YTD savings of \$14,220 which is the result in our solar power generation, there is also savings in fuel (diesel) as our North block boiler which ran on diesel has been decommissioned and replaced with hot water heat pumps which run off solar during daylight hours.

Regards
Anton