

WAIPU COVE RESERVE(S) BOARD

Monday 1st November 2021, 7pm
Camp Waipu Cove all-weather room.
ALL WELCOME

OPENING KARAKIA

AGENDA (E & OE)

PRESENT: A. Trist, L. Trist, Hollie, R. King, E. Cook, P. Baker, K. Baker, R. Pullan, K. Manning, R. Stolwerk

APOLOGIES: L. Minhinnick

MINUTES OF THE LAST MEETING: Approved - R. Stolwerk/E. Cook/All in favour

CONFLICT OF INTEREST: None

CORRESPONDENCE:

Inwards:

30/09/2021 – R & P Murray – Request for AGM zoom link

03/10/2021 – Y & G Mattson – Request for AGM zoom link

04/10/2021 – M & A Sale – Covid restrictions

07/10/2021 – M. Bell – Flooding

18/10/2021 – A. Kindred – Covid restrictions

22/10/2021 – A. Kindred – Re. Covid restrictions

24/10/2021 – L & T Harlick (via managers) – Covid restrictions (additional response received 27/10)

27/10/2021 – Y & G Mattson – Acknowledgement of email

Outwards:

01/10/2021 – R & P Murray – AGM zoom link

03/10/2021 – Y & G Mattson – AGM zoom link

09/10/2021 – M. Bell – Flooding

21/10/2021 – Y & G Mattson, M & A Sale, A. Kindred, G & J Subritzky – Covid restrictions

27/10.2021 – L & T Harlick, D Hammond & J Bridge – Covid restrictions

MOTION to pass inwards and outwards correspondence - R. Stolwerk/R. King/All in favour

REPORTS:

- **Management report (attached)**

Most cancellations are transferring their deposit to a booking for next summer.

- **Financial report**

Waiting on September financials from accountant.

- **WCSLSC Report (verbal)**

Quiet labour weekend. Closed beach due to dangerous conditions for some of weekend. Can operate under level 2 & 3 but have had to manage junior surf and comply with Covid restrictions. Funding has been affected by Covid. Beach wheels are now operational – huge amounts of positive PR. Thanks to the camp for managing the bookings for the beach wheels. Three school camps have cancelled bookings. Crew are motivated and happy to be back. Paid guards start mid-December through to Waitangi Day (essential service). Call out squad has vaccine mandate as per Surf Life Saving NZ.

MOTION to pass reports – P. Baker/R. King/All in favour

GENERAL BUSINESS

- **Boat ramp path**

Managers have received advice and pricing estimates from local experts. Discussion regarding best material options, access ways and design details. Managers will meet onsite with Sharon from Parafed Northland and Bill Aspden to better understand requirements of users and further ascertain gradient and impact on boat ramp and surrounding grass verge.

- **Info for dog owners**

At present, the only signage for dog owners is to advise them to pick up after their dogs. Discussion regarding dogs on the beach – particularly over summer. Bylaw states dogs should be ‘under control or on a leash’ on the beach. Discussion regarding signage, sign pollution and policing of rules. Roger will investigate bylaw changes.

- **Term deposits**

No further amount to be placed in term deposits at present.

- **Pariwaka stream - monitoring and recommendations**

Board discussed at length the need to ensure that Pariwaka stream is in the best possible position to avoid the historical nuisance of algae. Board agreed that heavy rainfall of late has created good flow downstream and out of the mouth of the stream to the ocean. The depth of the stream is good along with high sand banks to ensure good draining and flow of the waters. Upon consideration of all factors, the board sees that the stream is in good health and is currently best placed to mitigate the algae nuisance issues without intervention. Unfortunately, Lisa was unable to attend and present Patuharakeke input for the Pariwaka stream discussion.

The board will take photos of the stream at present and await input from Patuharakeke.

- **ASH 30-day rule (Covid consideration)**

Discussion regarding ASH (specifically those in Auckland). There will be leniency if any ASH are unable to complete minimum 30-days and renewal of contract will not be impacted by this. Next year’s contract will include a Covid clause. A 5% discount on fees has been given to ASH in Auckland. Further discussion will be held at December meeting if Auckland borders are not opened up prior to Christmas.

- **Vaccination policy**

The board is aware that this is an important topic and one that requires due consideration. The board has decided to wait for further guidance and advice from within the industry and the government before making a decision. However, a decision will be made by early December so that visitors to the camp can then make their own informed choices. This will be advised via email and on our website. DoC may provide their own policy but have not commented so far.

CLOSING KARAKIA

Upcoming events on the reserve and local area

- **Waipu Saturday Market:** First Saturday of the Month in Presbyterian Church Hall 9-1pm
- **Waipu Boutique Sunday Market & Café:** 2nd Sunday of the Month, Waipu Coronation Hall 9-1pm
- **Waipu Street Market** - Sundays of long weekends (Saturday at Easter) 9-1pm
- **Waipu Antiques and Collectables Fair** – Sunday of Long weekends 9-4pm
- **Annual mid-winter festival of surfing at Waipu Cove** – Sunday 15th August (29th August backup date)

Meeting ended: 8.15pm

Next meeting: Wednesday 1st December 6pm

Managers’ Report for October 2021

October has been a very quiet month at the camp so there is not a lot to report on. We have remained effectively cut off from the rest of New Zealand but still had some Northland customers until the region moved back into COVID alert level 3 for 11 days, with the camp shutting during this time. This meant we lost the half the school holidays and all the bookings we had.

Labour Weekend has just been and gone, and the was camp virtually empty for the first time ever on a long weekend. Auckland’s ongoing COVID restrictions meant campers could not get here. The severe weather (as well as

the announcement of COVID cases in Kaikohe at the beginning of the long weekend) understandably proved off-putting for Northlanders. Due to this, and most of the school holidays being in lockdown, we have had a large volume of cancellations to process with over \$22K in refunds so far. Many of those who cancelled did opt to rebook for a later date using the deposit from the cancelled booking as a credit.

The ongoing restrictions on movement between regions delayed the arrival of furniture for the new cabins, and bathroom fittings such as mirrors and towel rails. The last items of furniture did not arrive until the 15th of October. The cabins were released for booking on the 17th of October, with bookings for the summer period quickly snapped up. The first guests have already stayed, so far with excellent feedback. Cabins 6 and 7 are looking great with their updated bathrooms and kitchens as well.

We have put two designated carparks next to cabins 1 & 2 which makes it easier for guests when parking their vehicles. They look very tidy. We will continue with the other cabin car parks over the next few months. The camp and reserve grounds have been sprayed for Onehunga weed this month.

The new concrete table tennis table recently arrived and has been put together. It is located outside the all weather room. This will no doubt prove popular with kids and adults alike over the summer.

We have once again had to cancel our Kiwihost training, which we had rescheduled for the 9th of November. The trainer would be travelling up from Auckland, and given the recent government announcement regarding Auckland's path out of COVID restrictions, it seems unlikely this could work anytime before summer.

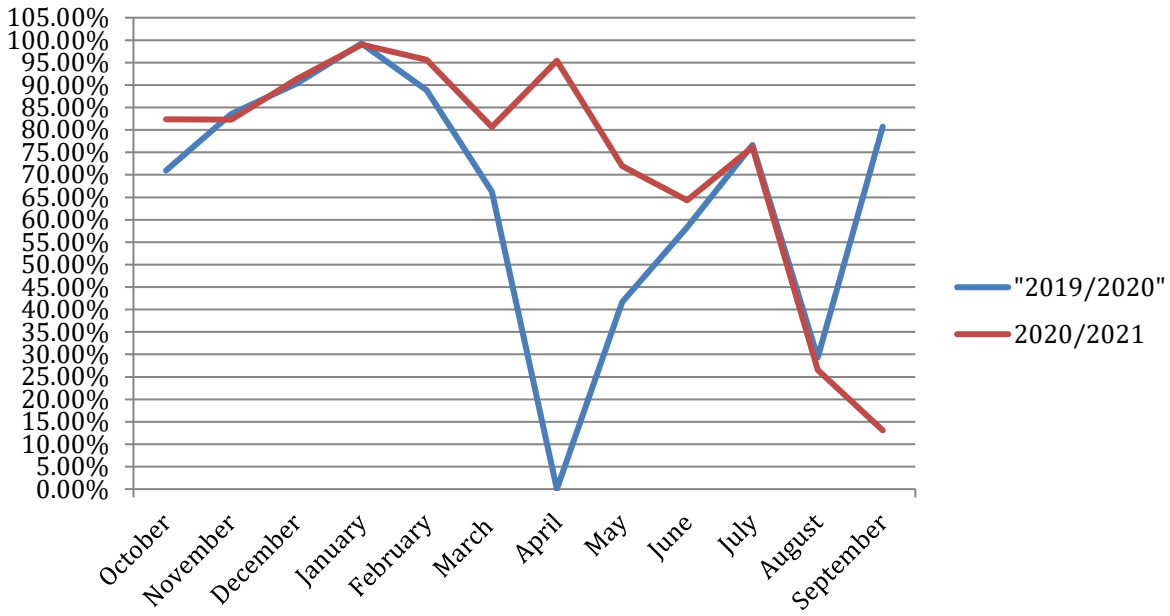
With the government just this week announcing more details around the reopening of the country and Auckland's pathway out of lockdown, we hope to know soon where we stand with regards to vaccine mandates with staff and guests. Over the coming weeks this should be clarified further so we can begin to get the relevant information out to all our customers. We are hoping that we will be able to welcome back our all our Auckland guests, (as well as the rest of NZ) for the summer months.

Regards

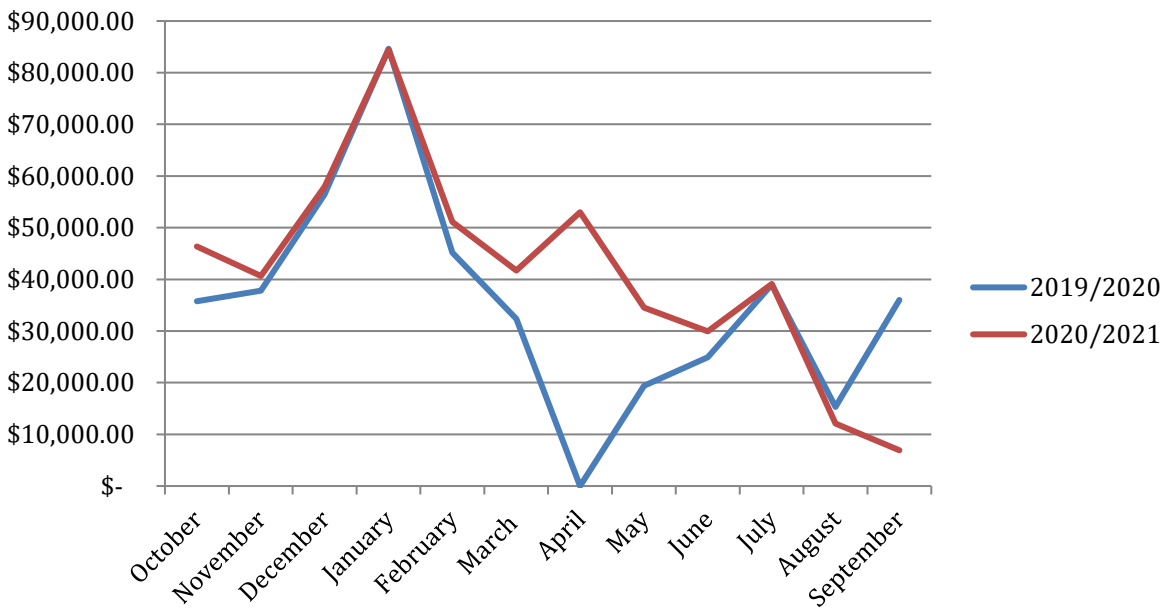
Anton and Lucy

Occupancy and Revenue for September 2021.

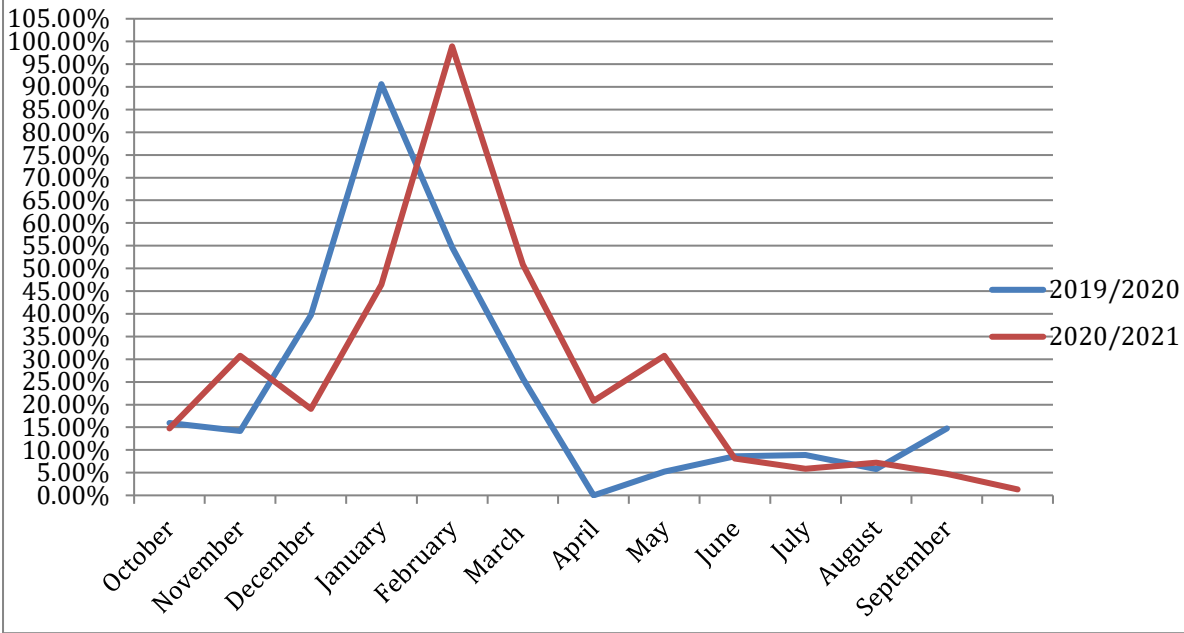
Cabin Occupancy %



Revenue - Cabins (monthly)

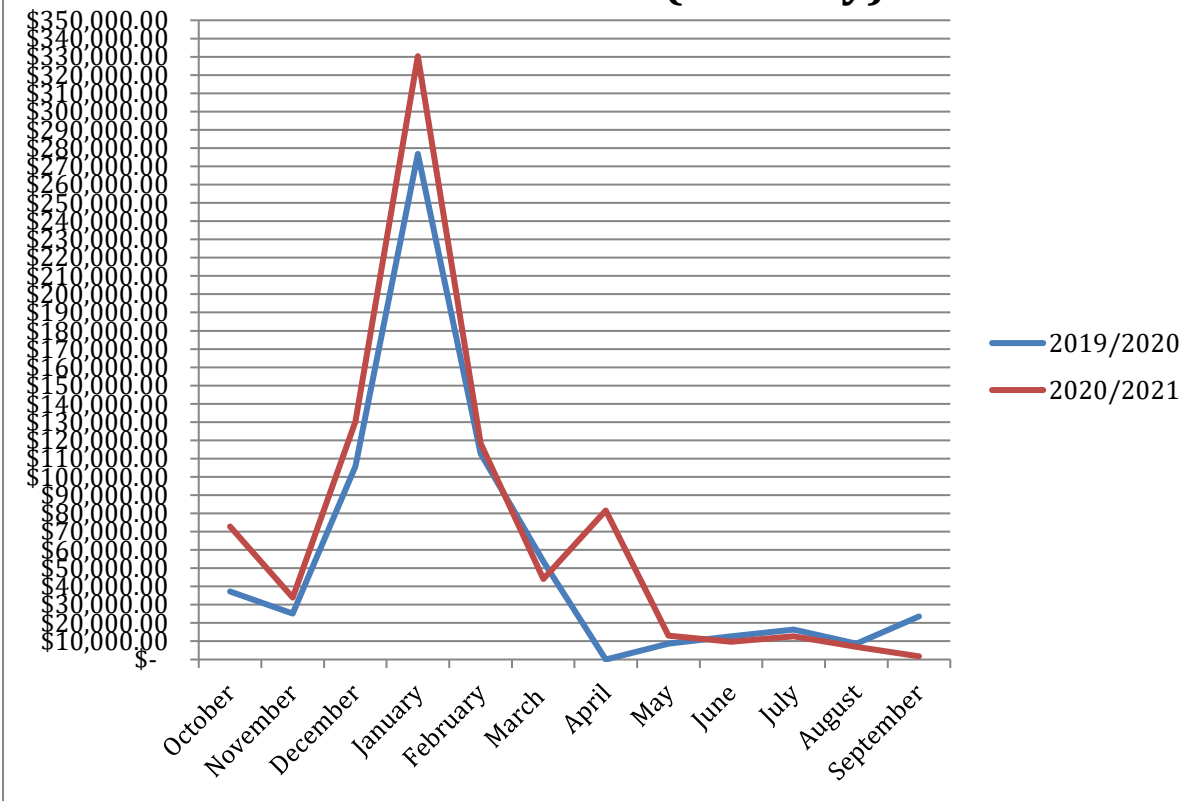


Site Occupancy %



Site Revenue

Revenue - Sites (monthly)



August 2021 Financials

	August 2021	August 2020	Comments
Revenue	\$ 49,072	\$ 57,672	Down \$8600
Payroll	\$ 33,888	\$ 41,054	Down \$7,166
Expenses	\$ 62,616	\$ 71,542	Down \$8,926
Surplus/deficit	\$ (\$1,736)	\$ (\$7,846)	Up \$6,110

Financial report August 2021

Revenue per ASH (60): \$530

Revenue per camp site (166): \$36

Revenue per cabin (13): \$829

Actual funds available in all bank accounts 04/10/21 = \$746,411.00 which includes \$140,018 on term deposit @ varying interest rates and terms.

Revenue:

August financials effected by COVID lockdowns again with the camp going into full lockdown 18th August and not opening up again for the month of August. We were \$8,600 down on LY due to the lock down which is pretty good considering we lost just under ½ the months trading. We made a small loss for the month of \$1,736.

Expenses

Were down \$8,926. YTD expenses are down \$29,157 however we have our insurance to be paid which will hit us in September's financials.