

WAIPU COVE RESERVE(S) BOARD

Sunday 3rd October 2021, 12pm
Camp Waipu Cove all-weather room.
ALL WELCOME

OPENING KARAKIA

AGENDA (E & OE)

PRESENT: R. Pullan (chairperson), B. Hopkins (minutes secretary), P. Baker, R. King, E. Cook, L. Trist, A. Trist, H. Kereopa, A. McCulloch, R. Stolwerk

APOLOGIES: L. Minhinnick

MINUTES OF THE LAST MEETING: 1st June 2021 - Minutes of the last meeting as circulated and published

Motion to pass minutes as true and correct - R. Stolwerk/P. Baker/All in favour

CONFLICT OF INTEREST: Peter will step down from discussion relating to ASH

CORRESPONDENCE:

Inwards:

20/06/2021 – M. Bell – Request for more information

09/08/2021 – M. Bell – Back Pathway

12/08/2021 – Bream Bay Sliders – Chang of date for festival

07/09/2021 – Y & G Mattson – Covid alert levels

15/09/2021 – Y & G Mattson – Re. Covid alert levels

15/09/2021 – G & J Subritzky - Covid alert levels

Outwards:

03/06/2021 – L. Rooney – Algae on the beach

26/06/2021 – M. Bell – Request for more information

13/08/2021 – M. Bell – Back Pathway

15/09/2021 – Y & G Mattson – Covid alert levels

Motion to pass correspondence - R. Stolwerk/E. Cook/All in favour

REPORTS:

- **Management report**

Attached below

- **Financial report**

Attached below. Now fully accrual based for year-on-year comparisons.

- **WCSLSC Report (verbal)**

As per AGM minutes.

Motion to pass all reports - R. Stolwerk/E.Cook/All in favour

GENERAL BUSINESS

- **Meeting review**

To be emailed to Board members after meetings

- **ASH query re. Covid alert levels**

Request to consider a fee discount for ASH due to the ongoing lockdowns in Auckland.

- There will be a government decision on Monday regarding border changes/lockdown levels – it would be premature to review this decision before then. Board to revisit this request following Monday's announcement and advise **Boat ramp beach access path for wheelchairs**

Concrete paths on reserve now complete and well received. Board discussion regarding how to continue access to beach for wheelchairs. Decision to obtain best practice advice from Sport Northland and opinion from builder/digger driver/concrete experts re. construction.

Addition to agenda:

- **Info for dog owners**

Angus raised that this is an international issue. He would like to see information for dog owners to explain expectations and kaupapa. Currently only information is to clean up after dogs and there is a sign at boat ramp to be respectful of birds. This topic is to be added to agenda for next meeting.

CLOSING KARAKIA

Upcoming events on the reserve and local area

- **Waipu Saturday Market:** First Saturday of the Month in Presbyterian Church Hall 9-1pm
- **Waipu Boutique Sunday Market & Café:** 2nd Sunday of the Month, Waipu Coronation Hall 9-1pm
- **Waipu Street Market -** Sundays of long weekends (Saturday at Easter) 9-1pm
- **Waipu Antiques and Collectables Fair –** Sunday of Long weekends 9-4pm

Meeting ended: 12.39pm

Next meeting: Monday 1st November 2021

Managers' Report for September 2021

It's been an interesting couple of months for the camp, as it has been for the whole of New Zealand. Northland spent over three weeks at level 3 and 4 COVID restrictions which meant the camp was closed completely during this time. Now we are open again under level 2 restrictions, but with only Northland customers able to come and stay currently, we are effectively shut off from the rest of New Zealand. We are hoping restrictions lift soon so we can welcome more customers back.

We experienced good occupancy levels during the July school holidays with the cabins at 75% occupancy for the month of July. We were tracking well for August until we went into lockdown on the 17th of August. This has meant lots of cancellations and refunds.

COVID restrictions have meant we've had to postpone the staff Kiwihost training (was scheduled for mid-September but now will happen in November) and the accommodation industry conference "Maximum Occupancy" has been postponed until further notice.

However, we did manage to attend the Holiday Parks New Zealand Association (HAPNZ) conference in early August where we were a finalist for the "ReviewPro Spirit of Hospitality" Award for being in the top 5 holiday parks in New Zealand for online reviews and customer feedback. We did not win this award but were extremely flattered to be a finalist.

The completion of the new cabin cluster has been slightly delayed due to the builders being unable to work during level 4, and some of the required materials and furnishings stuck in Auckland. Fortunately, these cabins are just days from being finished as we write this report, and there will be plenty of interest once we begin taking bookings for them. Our internal furniture is currently held up in Auckland and cannot be delivered, hopefully we get this in the next few days.

The kitchen and bathroom refurbishment for cabins 6 and 7 have just been completed and they are looking fresh and new again. We have also had the curtains and sofas in all cabins steam cleaned by Chemdry. Our cleaners have been deep cleaning the cabin interiors while it's quiet as well as waterblasting the cabins and other buildings around the camp. The arborists have been done the annual trimming of trees around the camp.

A concrete path through has been laid which runs from the camp through the reserve to the boat ramp. It looks great and improves access to the reserve for those who are less mobile and parents with pushchairs. We've had lots of positive comments from the public. We are now looking at adding an additional path alongside the boat ramp to allow wheelchairs access onto the beach. The Waipu Cove Surf Lifesaving club have just got new beach wheelchairs –

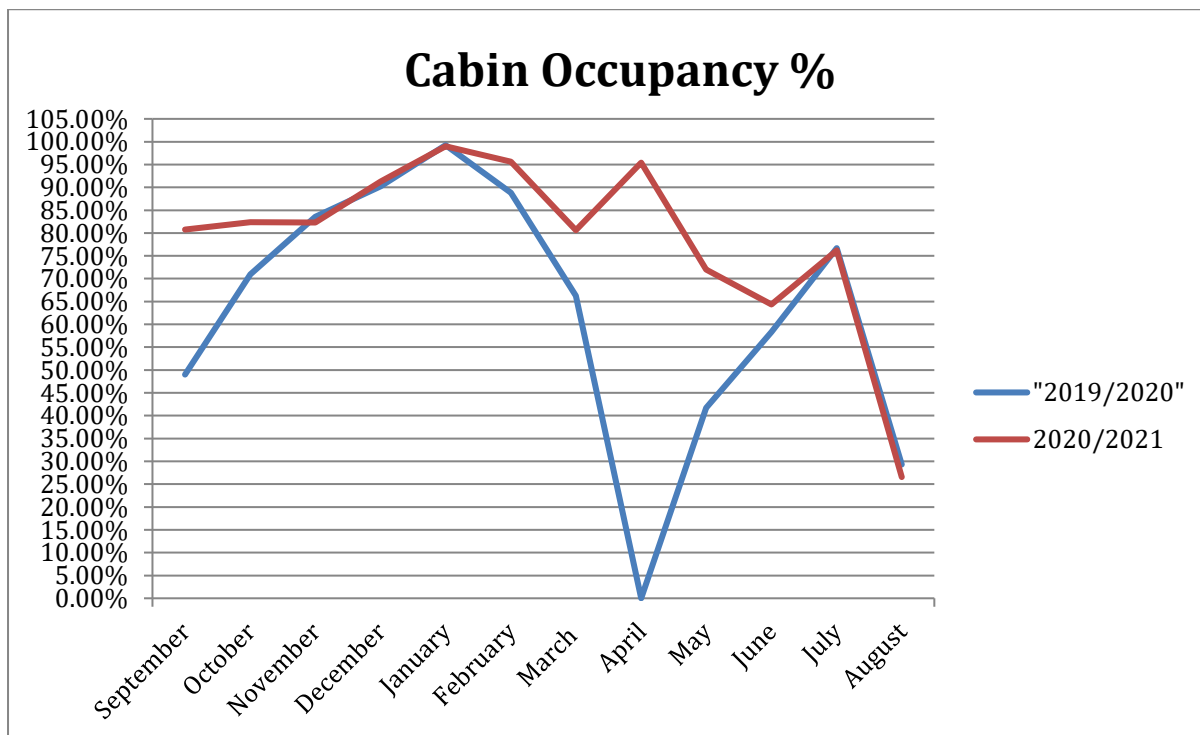
one for adults and one for children. We are taking bookings for these at reception. All this, along with the new accessible cabin will have us well set up for our disabled guests. Waipu Cove have just been named in a recent Stuff article as one of the top 10 accessible beaches in NZ.

“Waipū Cove Beach has recently improved their access tenfold with concrete paving from the surf life-saving club along to the boat ramp access. They now have two new beach wheelchairs for use on Labour Weekend and then again from November through to Easter. The beach wheelchairs can be booked through Camp Waipū Cove. This is a stunning beach to make accessible with a mobility park right on entry”

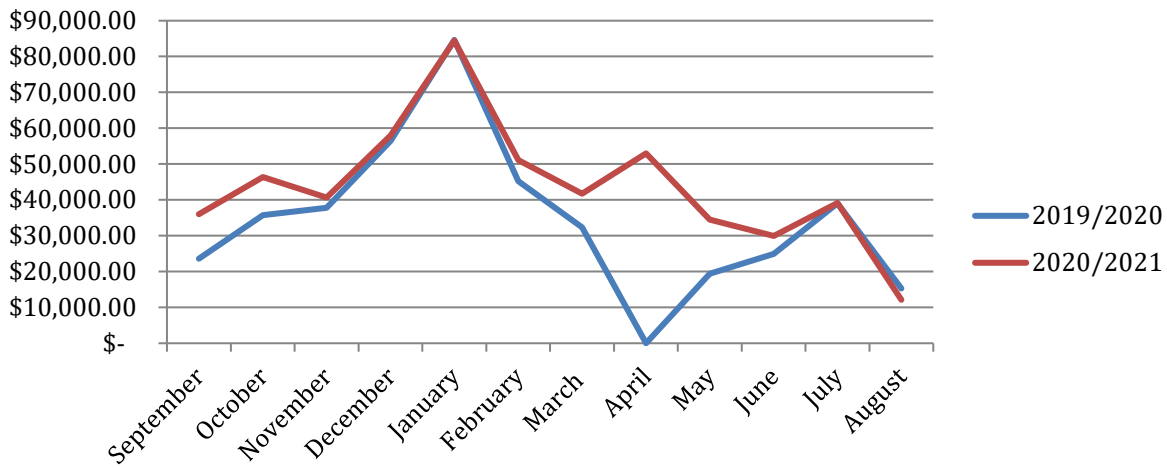
By Kimberly Graham, published on Stuff.co.nz, September 19th 2021

It's awesome to be able to cater better to disabled guests as we know there are many out there who will use these facilities.

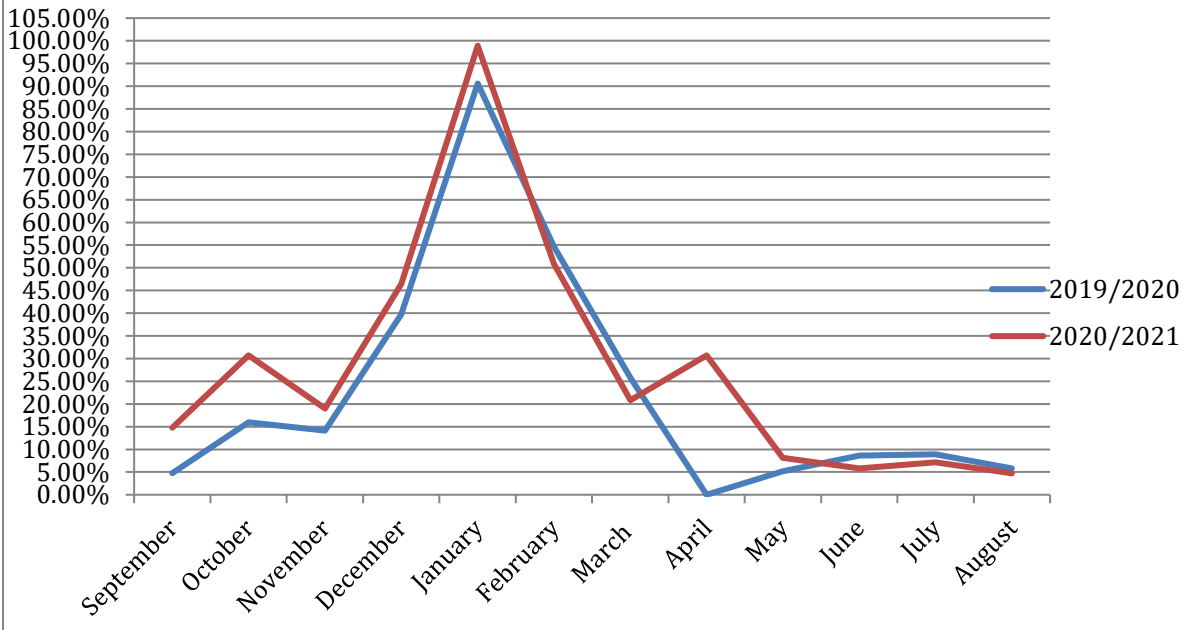
Occupancy and Revenue for August 2021.



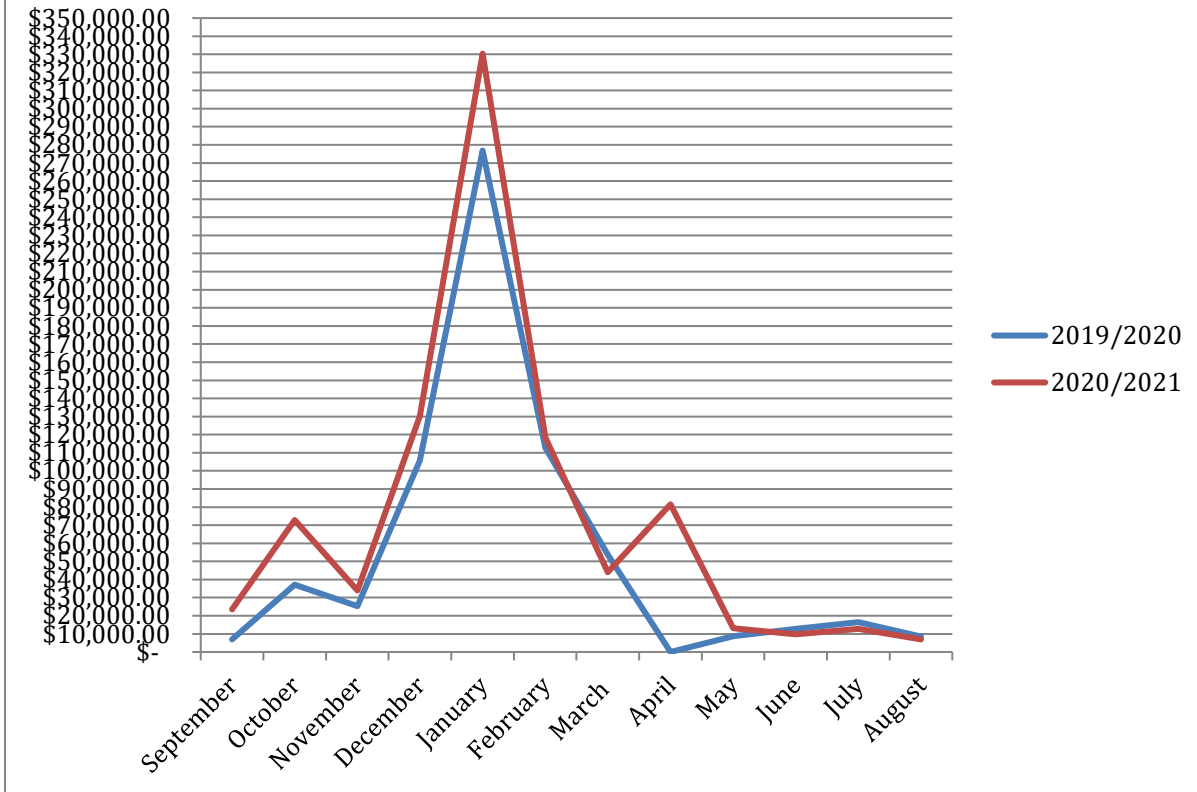
Revenue - Cabins (monthly)



Site Occupancy %



Revenue - Sites (monthly)



May 2021 Financials

May 2021 financials. For the 2020/2021 financial year we have moved to an accrual-based accounting system from “cash” based, for the purposes of reporting we will continue to report on a “cash” based system until the end of the 2021 financial year so comparisons are accurate.

	May 2021	May 2020	Comments
Revenue	\$ 53,089	\$ 54,982	Down \$1,893
Payroll	\$ 38,423	\$ 35,013	Up \$3,410
Expenses	\$ 71,272	\$ 55,158	Up \$16,114
Surplus/deficit	\$ (18,174)	\$ 21,827	Down 40,001

Financial report May 2021

Revenue per ASH (66): \$0

Revenue per camp site (160): \$118

Revenue per cabin (13): \$2,525

Actual funds available in all bank accounts 29/06/21 = \$973,654.00 which includes \$602,237.00 on term deposit @ varying interest rates and terms.

Revenue:

May financial largely impacted by COVID last year as we received wage subsidy and also had our kick start 72 hours sale last May, so comparisons are difficult to make to LY. YTD revenue is up \$311,213 with casual camping sites up

\$259,478 which equates to around an extra 5,700 occupied camping sites on the previous year. Our YTD surplus is a healthy \$721,144 up \$134,910 on LY

Expenses

Up \$16,114 on last May, again this is due to COVID as a number of our expenses/contracts were put on hold during the COVID lockdown period last year. YTD expenses are up \$167,524