

WAIPU COVE RESERVE(S) BOARD

24th May 2019, 7pm

Camp Waipu Cove all-weather room.

ALL WELCOME

AGENDA (E & OE)

PRESENT:

APOLOGIES:

MINUTES OF THE LAST MEETING:

MATTERS ARISING:

CORRESPONDENCE:

Inwards:

23/04/2019 – A. McCulloch – Public discussion around annual site holdings

26/04/2019 – A. McCulloch – A matter of public record

01/05/2019 – M. Bell – Follow up questions & request for meeting minutes

02/05/2019 – P. Murray – Request for agenda

08/05/2019 – B&G Fisher – Sale of caravan

08/05/2019 – Y. Mattson on behalf of most (not all) ASH – DoC Policy Change (further correspondence on 09/05/2019)

Outwards:

22/04/2019 – Y. Mattson on behalf of ASH – Response to questions

03/05/2019 – P. Murray – April Agenda/Minutes sent

03/05/2019 – M. Bell – April meeting minutes

07/05/2019 – M. Bell – Answers to questions

08/05/2019 – B&G Fisher – Sale of caravan

09/05/2019 – Y. Mattson on behalf of most (not all) ASH – DoC Policy Change (further correspondence on 09/05/2019)

REPORTS:

- Management report
- Financial report
- WCSLSC Report (verbal)

GENERAL BUSINESS

- Budget Approval
- Resource consent drawings for 3 one bedroom self-contained cabins

Upcoming events on the reserve and local area

- Waipu Saturday Market: First Saturday of the Month in Presbyterian Church Hall 9-1pm
- Waipu Boutique Sunday Market & Café: 2nd Sunday of the Month, Waipu Coronation Hall 9-1pm
- Waipu Street Market - Saturdays of long weekends 9-1pm
- Waipu Antiques and Collectables Fair – Sunday of Long weekends 9-4pm

Next meeting...

Meeting Closed at...

Managers' Report May 2019

The past month has been surprisingly busy. We have been lucky enough to have fantastic warm weather until just recently – it is only just starting to feel like autumn has come in the last week or so. Easter and the recent school holidays saw higher than usual occupancy levels, most likely due to aforementioned weather.

Albany Junior High School have spent the last two weeks here on school camp. It is their first time camping here, and as it has been organised by Bigfoot Adventures, things have run smoothly - as it usually does where they are involved. We are hoping this may become a yearly booking, and so far, the feedback has been positive. The school bought up four separate groups over the two weeks, using the surf club for catering. The weather has been a bit of a

mixed bag this week but hasn't seemed to deter the kids from having fun. School camp season seems to be getting longer and longer every year which is great for us.

We have forwarded the 2019/20 budget to the board and are now just awaiting approval. Also, we have produced a 6-year budget forecast showing what the camps financial position will look like when all ASH have gone after 2025.

The ASH power meters have all been read and bills issued for payment. All new ASH contracts are ready to be emailed/posted in late May for the next year's ASH contract. So far, we have confirmation of site 186 and 245 will not be renewing. 178 already moved offsite in March.

The rubbish truck condition has deteriorated, in fact we have had to have a lot of work done on it recently, as it failed it's latest COF. We will need to look at a replacement in the next 12 months, as the truck will continue to cost us more and more money to maintain to a compliant standard.

Now that we are moving into our off season, we will be undertaking some staff training. Swas and Lucy sat their First Aid certificates this month, with three other staff booked in for a first aid refresher in June. This month Lucy attended an EMA course in Auckland. We also had the defibrillator out the front of reception accessed last week due to a medical emergency, thankfully it was not required but they were very thankful for us having this available to the local community.

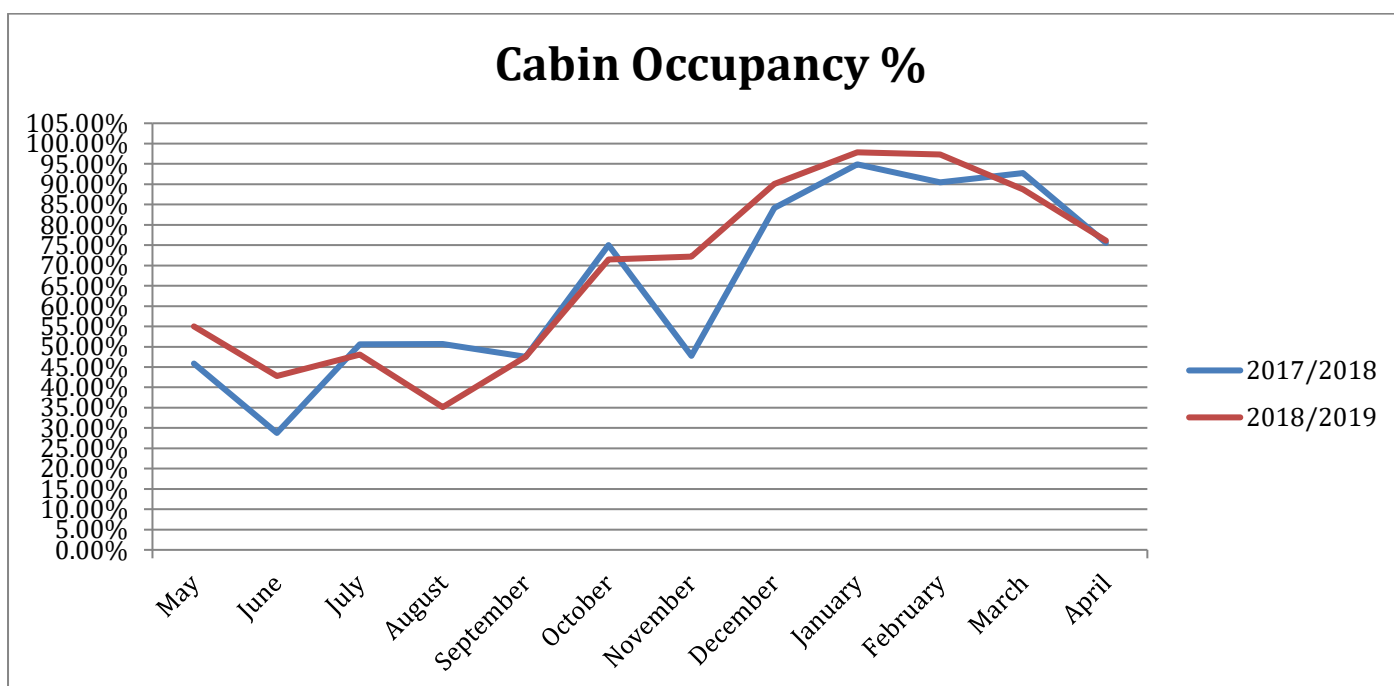
Construction of the new one-bedroom self-contained cabin commenced at the start of May, with good progress being made so far. The proposed BBQ area for this cabin cluster will also commence construction later this month. Resource consent for the remaining three cabins will be applied for after the board has decided on the layout i.e location of disability cabin, location of parking. We will be having a walk around with the board and going over options prior to our meeting this month.

Regards

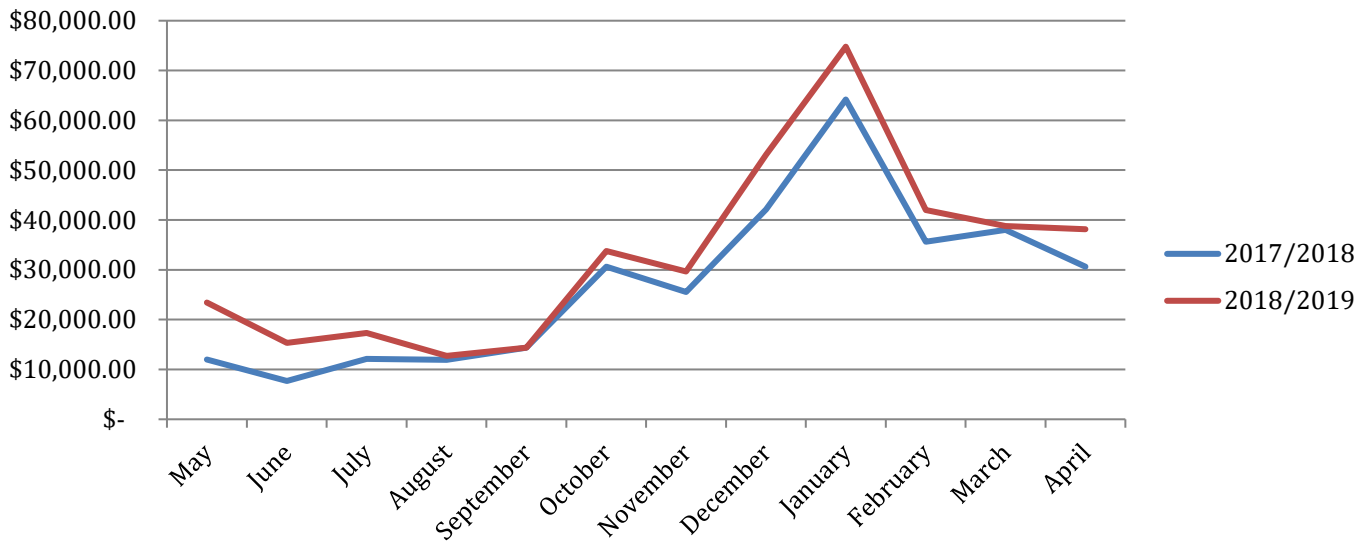
Anton and Lucy Trist

Occupancy and Revenue – April 2019

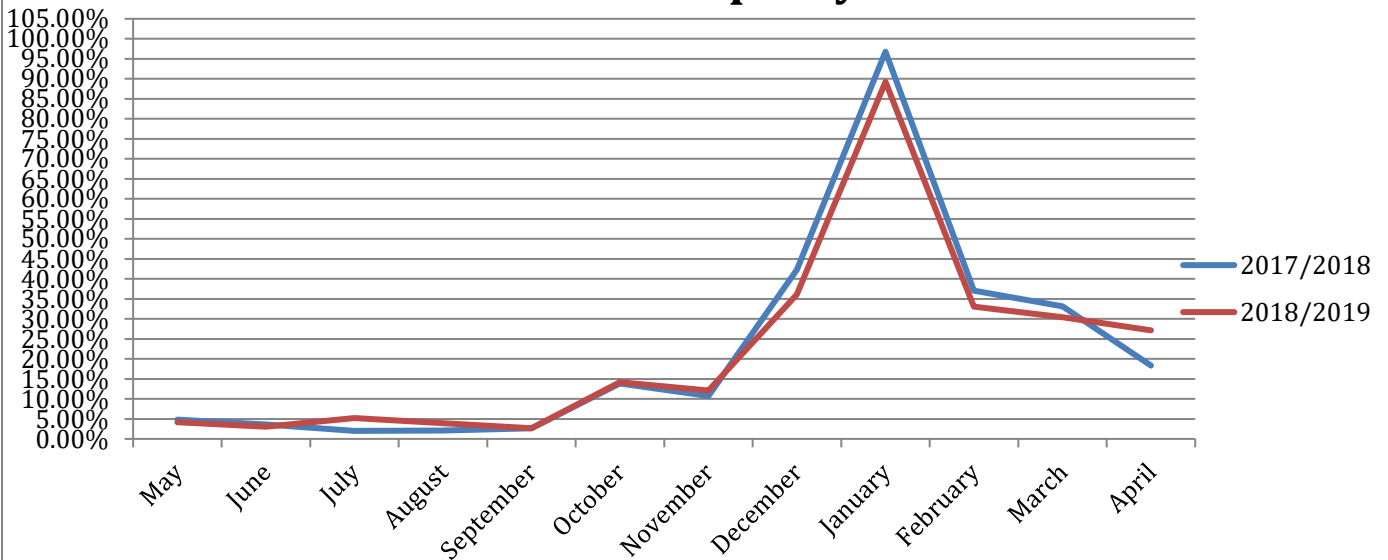
Cabin Occupancy



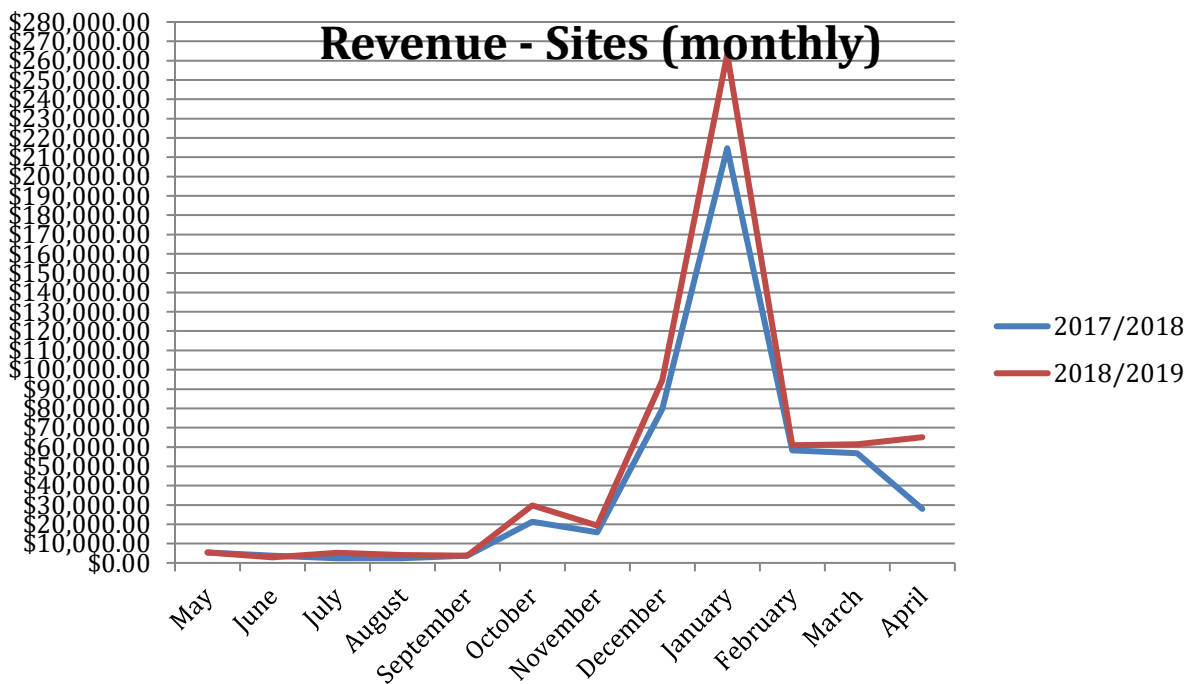
Revenue - Cabins (monthly)



Site Occupancy %



Revenue - Sites (monthly)



Occupancy and revenue's up due to Easter falling in April this year and more favourable weather conditions in particular the weekends. Cabin Occupancy 76.32% and site occupancy 29.53%.